

LEA Name : Phoenixville Area SD
Address : 386 City Line Ave
Phoenixville , PA 19460

County : Chester
AUN Number : 124157203
LEA Type : SD

**Annual Financial Report
Accuracy Certification Statement**


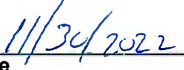

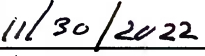
For Fiscal Year Ending
6/30/2022

Pennsylvania Department of Education
&
Office of Comptroller Operations

PDE-2056: Intermediate Unit

PDE-2057: School District, AVTS/CTC, Charter School,
and Special Program Jointure

CERTIFICATION: By signing this page I agree that the electronic data submitted is a complete and accurate statement of the financial operations and status of the local education agency for the fiscal year. It has been prepared in accordance with generally accepted accounting principles and established Commonwealth of PA reporting guidelines.

 _____ Chief School Administrator Signature	 _____ Date
 _____ Board Secretary Signature	 _____ Date

Jeremy Melber

Contact Person

melberj@pasd.com

Contact Person E-mail Address

(484)927-5020 Ext :

Contact Person Telephone Number

Contact Person Fax Number

Audit Certification
Annual Financial Report:
For Fiscal Year Ending **6/30/2022**
(Pursuant to PA School Code Section 218(b))

LEA Name : Phoenixville Area SD
AUN Number : 124157203
County : Chester

Audit Certification Due: 12/31/2022

This certification is applicable to the Annual Financial Report data submitted through the Consolidated Financial Reporting System (CFRS).

CERTIFICATION: By signing this page I agree that the financial statements of the school have been properly audited as noted above pursuant to Article XXIV, and in the auditor's professional opinion, the Annual Financial Report (PDE-2057) submitted through CFRS is materially consistent with the audited financial statements.

Chief School Administrator

Board Secretary

Signature

Date

Signature

Date

Jeremy Melber

Contact Person

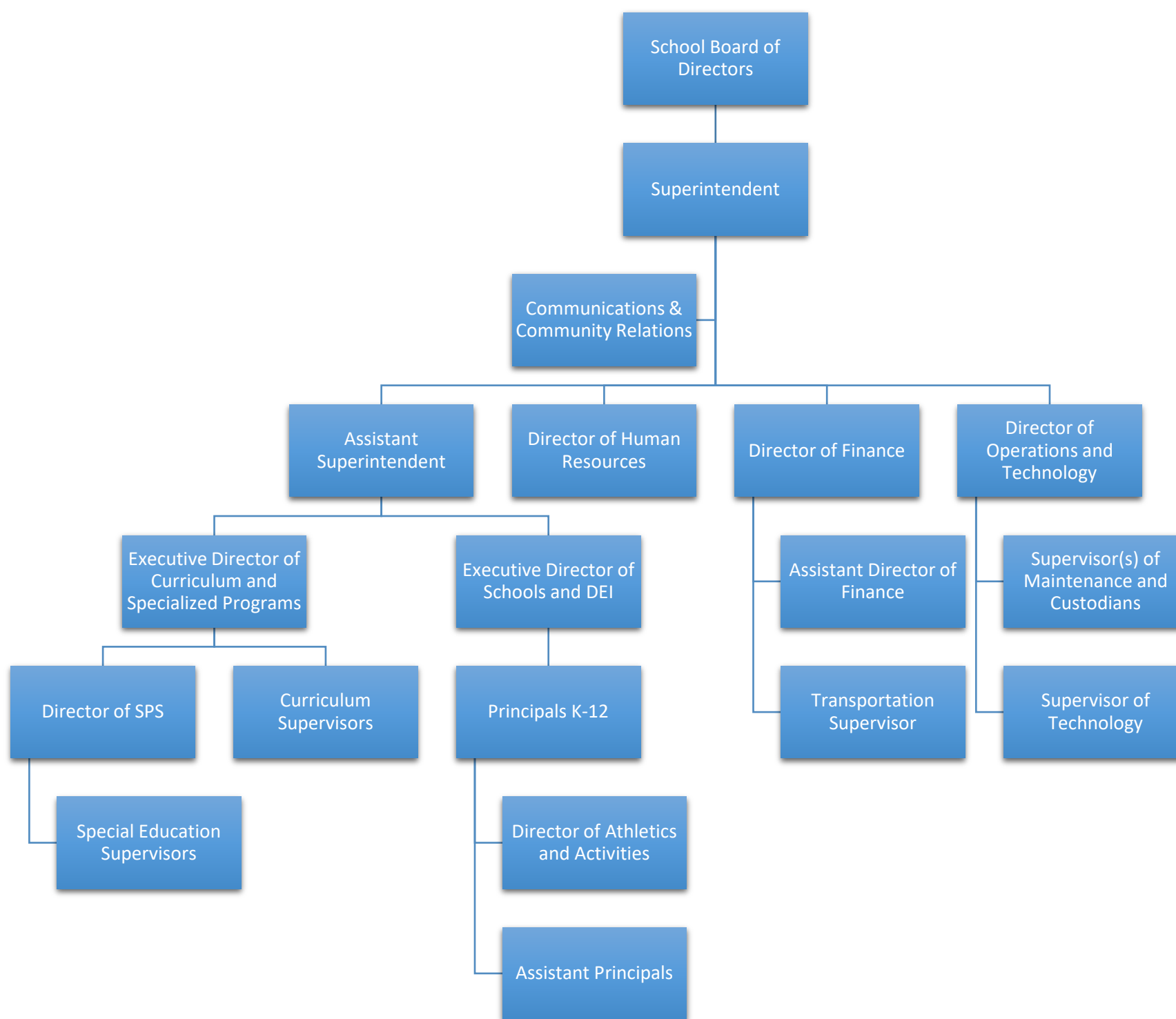
melberj@pasd.com

Contact Person E-mail Address

(484)927-5020 Ext :

Contact Person Telephone Number

Contact Person Fax Number





Book	Policy Manual
Section	600 Finances
Title	Fixed Asset Policy AR
Code	622 AR
Status	Active
Last Revised	April 21, 2015

ADMINISTRATIVE GUIDELINES
POLICY NO. 622
FIXED ASSET POLICY

Capital Assets

Definition –

In accordance with Governmental Accounting Standards Board Statement number 34, **capital assets** include land, improvements to land, easements, buildings, building improvements, vehicles, machinery, equipment, works of art, historical treasures and infrastructure. Capital assets are both tangible and intangible assets used in operations and have initial useful lives extending beyond a single reporting period. Equipment will not change its original shape, appearance or character with use and it can be expected to last more than one year with reasonable care and maintenance.

Purchased Capital Assets

Purchased capital assets greater than or equal to \$5,000 should be recorded at their historical/original cost. The cost of capital assets should include capitalized interest and ancillary charges necessary to place the asset into service. Ancillary charges include freight, site preparation and professional fees. Purchases less than \$5,000 are treated as supplies and are coded to the supply objects prescribed by the Pennsylvania Public School Accounting Manual.

Capital assets should be depreciated over their useful lives as determined for each asset class. Inexhaustible capital assets such as land and land improvements should not be depreciated.

If determining historical cost is not practical due to inadequate records, reporting should be based on estimates of original cost at the date of construction or purchase.

Fixed asset records must include the acquisition date, cost, useful life, depreciation method and salvage value for capital asset classifications and groups.

Individual items costing less than \$5,000, but purchased in quantity such that the aggregate total cost meets or exceeds \$5,000 shall be capitalized and depreciated as a unit over the useful life for that asset class.

Due to changes in technology, computer software is considered a supply and is expensed at the time of purchase. Components such as monitors, keyboards shall be capitalized as a unit upon purchase when the individual components are less than the capitalization thresh-hold but in the aggregate meet or exceed the thresh-hold for technology equipment of \$2,000.

Cafeteria, kitchen appliances and food service equipment shall be capitalized when individual items equal or exceed a thresh-hold of \$2,000 and shall be capitalized as a unit upon purchase when the individual components are less than the capitalization thresh-hold but in the aggregate meet or exceed the thresh-hold of \$2,000.

Donated Capital Assets: Donated Capital Assets

Donated capital assets must be reported at fair market value plus ancillary charges if any at the time of donation. Donated assets are recorded as contributed capital and depreciated over their useful lives as determined for each asset class.

If determining historical costs is not practical due to inadequate records, reporting should be based on estimates of fair market value at the date of donation.

Collections

Works of art, historical treasures and similar assets should be capitalized at their historical cost or fair value at date of donation (estimated if necessary) whether they are held as individual items or in a collection.

Capitalized collections or individual items that are exhaustible should be depreciated over their useful lives. Depreciation is not required for collections or individual items that are inexhaustible.

Infrastructure

Definition –

Infrastructure assets are long-lived capital assets that normally are stationary in nature and can normally be preserved for a significantly greater number of years than most capital assets. Infrastructure includes site improvements such as parking lots and sidewalks, as well as fiber-optic systems for computer networks or consulting on acquisitions.

Infrastructure assets should be depreciated over the useful lives. Routine repairs and maintenance costs are charged to operations as incurred. Expenditures that extend the useful life of the infrastructure are capitalized as an asset and depreciated over the newly established useful life.

Useful Lives - Fixed assets are to be depreciated over the following useful lives:

ASSET CLASS YEARS

School Buildings 40

Electrical/Plumbing 20
 HVAC Systems 20
 Interior Construction 20
 Outdoor Equipment 20
 Portable Classrooms 20
 Roofing 20
 Site Improvements 20
 Sprinkler/Fire System 20
 Stage & Auditorium 20
 Contractors Equipment 10
 Furniture & Accessories 10
 Kitchen Equipment 10
 Machinery & Tools 10
 Musical Instruments 10
 Licensed Vehicles 8
 Athletic Equipment 7
 Audio Visual Equipment 7
 Grounds Equipment 7
 Business Machines 5
 Carpeting, New/ Replacement 5

Communication Equipment 5
Custodial Equipment 5
Library Books 5

Science & Engineering 5
Uniforms 5
Computer Hardware and IT Assigned Software
Depreciation Expense

Depreciation expense should be reported in the statement of activities. Depreciation expense that can be specifically identified with a function should be included as a direct expense. Depreciation expense for shared facilities should be ratably included in direct expenses for each function.

Depreciation is allocated to expense in a systematic and rational manner. The straight- line, half-year convention, method of depreciation is used.

Depreciation may be calculated for a class of assets, a network of assets or individual assets.

Assets Acquired By Capital Lease

Assets acquired by capital lease are recorded at the net present value of the future minimum lease payments. A corresponding liability is established at this time. Assets acquired under the terms of capital leases are depreciated over the useful lives designated for the asset class.

<u>Val Number</u>	<u>Description</u>	<u>Justification</u>
10150	NAG: Balance Sheet Govt Funds:Data has been entered for Fund 32, Line 0400 - Due to Other Funds. Since transfers out of Fund 32 are not allowed, this line should only be utilized when recording transactions related to interfund reimbursements. Please make corrections or provide brief details of the interfund reimbursement. NAG Fund 32, Line 0400: \$418,691.00	Transfer to reimburse General Fund for expenses
30550	Revenue Detail: Tax Revenue Data must be reported consistently for current and prior year. Correct the data or enter a justification. 6120, Current AFR Rev Detail: \$0.00 6120, Prior AFR Rev Detail: \$54,750.71	Correction to ledger from previous years to properly account for revenue.
30625	Revenue Detail: Current Tax Revenue amount cannot exceed 50% variance from prior year amount. Correct the data or enter a justification. 6120, Current AFR Rev Detail: \$0.00 6120, Prior AFR Rev Detail: \$54,750.71	Correction to ledger from previous years to properly account for revenue.
30635	Revenue Detail: Current Tax Revenue amount cannot exceed 50% variance from prior year amount. Correct the data or enter a justification. 6140, Current AFR Rev Detail: \$166,771.25 6140, Prior AFR Rev Detail: \$109,501.41	Correction to ledger from previous years to properly account for revenue.
30685	Revenue Detail: Current Tax Revenue amount cannot exceed 50% variance from prior year amount. Correct the data or enter a justification. 6153, Current AFR Rev Detail: \$2,414,162.45 6153, Prior AFR Rev Detail: \$1,509,271.19	Increase in property sales and transfer taxes.
50430	SESS - 2160 Social Work Services: SESS Schedule amounts for Special Education vary from prior year by 40% or more. Correct the data or enter a justification. SESS Schedule 2160: \$21,345.19 Prior Year SESS Schedule 2160: \$2,625.00	Increased need to due to case load
50440	SESS - 2260 Instruction and Curriculum Development Services: SESS Schedule amounts for Special Education vary from prior year by 40% or more. Correct the data or enter a justification. SESS Schedule 2260: \$797,520.54 Prior Year SESS Schedule 2260: \$380,801.00	Increase in services to due to the effects of learning loss from the pandemic.

50450	SESS - 2350 Legal and Accounting Services: SESS Schedule amounts for Special Education vary from prior year by 40% or more. Correct the data or enter a justification.	Increase in legal fees due to case load
	SESS Schedule 2350: \$11,424.81 Prior Year SESS Schedule 2350: \$92,701.00	

50460	SESS - 2420 Medical Services: SESS Schedule amounts for Special Education vary from prior year by 40% or more. Correct the data or enter a justification.	Increase of needs due to the case load.
	SESS Schedule 2420: \$235,508.51 Prior Year SESS Schedule 2420: \$161,688.00	

Amounts Expressed in Whole Dollars	<u>General Fund</u> <u>(10)</u>	<u>Student Sponsored</u> <u>Activity Fund</u> <u>(21)</u>	<u>Public Purpose Trust</u> <u>(27)</u>	<u>Other Compt Approved</u> <u>(28)</u>	<u>Athletic / Activity</u> <u>(29)</u>
Assets And Deferred Outflows Of Resources					
Assets					
0100 Cash and Cash Equivalents	5,679,738				
0110 Investments	29,594,545				
0120 Taxes Receivable	5,897,233				
0130 Due From Other Funds	893,528				
0141 Due From Other Governments					
0142 State Revenue Receivable	2,284,683				
0143 Federal Revenue Receivable	1,206,905				
0145 Other Intergovernmental Revenue Receivable					
0146 Due from Primary Government					
0147 Due from Component Unit					
0150 Other Receivables	192,129				
0170 Inventories					
0180 Prepaid Expenses (Expenditures)	21,051				
0190 Other Current Assets					
Total Assets	\$45,769,812				
0910 Deferred Outflows of Resources					
Total Assets And Deferred Outflows Of Resources	\$45,769,812				

Amounts Expressed in Whole Dollars

Capital Reserve (690.1850) Capital Reserve (1431)(32) Other Capital Projects Fund (39) Debt Service (40) Permanent (90)

Assets And Deferred Outflows Of Resources

Assets

0100 Cash and Cash Equivalents		2,127,973	276,921		
0110 Investments		21			
0120 Taxes Receivable					
0130 Due From Other Funds					
0141 Due From Other Governments					
0142 State Revenue Receivable					
0143 Federal Revenue Receivable					
0145 Other Intergovernmental Revenue Receivable					
0146 Due from Primary Government					
0147 Due from Component Unit					
0150 Other Receivables					
0170 Inventories					
0180 Prepaid Expenses (Expenditures)					
0190 Other Current Assets					
Total Assets		\$2,127,994	\$276,921		
0910 Deferred Outflows of Resources					
Total Assets And Deferred Outflows Of Resources		\$2,127,994	\$276,921		

Amounts Expressed in Whole Dollars

Total Governmental Funds

Assets And Deferred Outflows Of Resources

Assets	
0100 Cash and Cash Equivalents	8,084,632
0110 Investments	29,594,566
0120 Taxes Receivable	5,897,233
0130 Due From Other Funds	893,528
0141 Due From Other Governments	
0142 State Revenue Receivable	2,284,683
0143 Federal Revenue Receivable	1,206,905
0145 Other Intergovernmental Revenue Receivable	
0146 Due from Primary Government	
0147 Due from Component Unit	
0150 Other Receivables	192,129
0170 Inventories	
0180 Prepaid Expenses (Expenditures)	21,051
0190 Other Current Assets	
Total Assets	\$48,174,727
0910 Deferred Outflows of Resources	
Total Assets And Deferred Outflows Of Resources	\$48,174,727

Amounts Expressed in Whole Dollars

	<u>General Fund</u> <u>(10)</u>	<u>Student Sponsored</u> <u>Activity Fund</u> <u>(21)</u>	<u>Public Purpose Trust</u> <u>(27)</u>	<u>Other Compt Approved</u> <u>(28)</u>	<u>Athletic / Activity</u> <u>(29)</u>
Liabilities And Deferred Inflows Of Resources And Fund Balances					
Liabilities					
0400 Due to Other Funds					
0411 Due to Other Governments					
0412 Due to Primary Government					
0413 Due to Component Unit					
0420 Accounts Payable	3,324,328				
0430 Contracts Payable					
0440 Current Portion of Long-Term Debt					
0450 Short-Term Payables					
0461 Accrued Salaries and Benefits	10,866,530				
0462 Payroll Deductions and Withholding					
0480 Unearned Revenues	347,561				
0490 Other Current Liabilities					
Total Liabilities	\$14,538,419				
0950 Deferred Inflows of Resources	4,931,935				
Fund Balances					
0810 Nonspendable Fund Balance	21,051				
0820 Restricted Fund Balance					
0830 Committed Fund Balance					
0840 Assigned Fund Balance					
0850 Unassigned Fund Balance	26,278,407				
Total Fund Balances	\$26,299,458				
Total Liabilities, Deferred Inflows Of Resources And Fund Balances	\$45,769,812				

Amounts Expressed in Whole Dollars

	<u>Capital Reserve (690.</u> <u>1850)</u> <u>(31)</u>	<u>Capital Reserve (1431)</u> <u>(32)</u>	<u>Other Capital Projects</u> <u>Fund</u> <u>(39)</u>	<u>Debt Service</u> <u>(40)</u>	<u>Permanent</u> <u>(90)</u>
Liabilities And Deferred Inflows Of Resources And Fund Balances					
Liabilities					
0400 Due to Other Funds		418,691	461,492		
0411 Due to Other Governments					
0412 Due to Primary Government					
0413 Due to Component Unit					
0420 Accounts Payable		210,715			
0430 Contracts Payable					
0440 Current Portion of Long-Term Debt					
0450 Short-Term Payables					
0461 Accrued Salaries and Benefits					
0462 Payroll Deductions and Withholding					
0480 Unearned Revenues					
0490 Other Current Liabilities					
Total Liabilities		\$629,406	\$461,492		
0950 Deferred Inflows of Resources					
Fund Balances					
0810 Nonspendable Fund Balance					
0820 Restricted Fund Balance		1,498,588			
0830 Committed Fund Balance					
0840 Assigned Fund Balance					
0850 Unassigned Fund Balance			(184,571)		
Total Fund Balances		\$1,498,588	(\$184,571)		
Total Liabilities, Deferred Inflows Of Resources And Fund Balances		\$2,127,994	\$276,921		

Amounts Expressed in Whole Dollars

Total Governmental Funds

Liabilities And Deferred Inflows Of Resources And Fund Balances

Liabilities

0400 Due to Other Funds	880,183
0411 Due to Other Governments	
0412 Due to Primary Government	
0413 Due to Component Unit	
0420 Accounts Payable	3,535,043
0430 Contracts Payable	
0440 Current Portion of Long-Term Debt	
0450 Short-Term Payables	
0461 Accrued Salaries and Benefits	10,866,530
0462 Payroll Deductions and Withholding	
0480 Unearned Revenues	347,561
0490 Other Current Liabilities	

Total Liabilities \$15,629,317

0950 Deferred Inflows of Resources	4,931,935
------------------------------------	-----------

Fund Balances

0810 Nonspendable Fund Balance	21,051
0820 Restricted Fund Balance	1,498,588
0830 Committed Fund Balance	
0840 Assigned Fund Balance	
0850 Unassigned Fund Balance	26,093,836

Total Fund Balances \$27,613,475

Total Liabilities, Deferred Inflows Of Resources And Fund Balances \$48,174,727

Amounts Expressed in Whole Dollars	<u>General Fund</u> <u>(10)</u>	<u>Student Sponsored</u> <u>Activity Fund</u> <u>(21)</u>	<u>Public Purpose Trust</u> <u>(27)</u>	<u>Other Compt Approved</u> <u>(28)</u>	<u>Athletic / Activity</u> <u>(29)</u>
Revenues					
6000 Revenue from Local Sources	84,485,161				
7000 Revenue from State Sources	18,905,608				
8000 Revenue from Federal Sources	2,925,910				
Total Revenues	\$106,316,679				
Expenditures					
1000 Instruction	55,217,772				
2000 Support Services	30,106,610				
3000 Operation of Non-Instructional Services	2,596,605				
4000 Facilities Acquisition, Construction and Improvement Services	5,005				
5110 Debt Service	10,471,398				
5130 Refund of Prior Year Revenues / Receipts					
5140 Leases					
Total Expenditures	\$98,397,390				
Excess (Deficiency) Of Revenues Over Expenditures	\$7,919,289				
Other Financing Sources (Uses)					
9110 Face Value of Bonds Issued					
9120 Proceeds from Refunding of Bonds					
9130 Bond Premiums					
9200 Proceeds from Extended-Term Financing and Leases					
9300 Interfund Transfers - IN					
9400 Sale of or Compensation for Loss of Fixed Assets					
9710 Transfers from Component Units					
9720 Transfers from Primary Governments					
9910 Other Financing Sources Not Listed in the 9000 Series					
9990 Insurance Recoveries					
5120 Debt Service – Refunded Bonds					
5150 Bond Discounts					
5200 Interfund Transfers – Out					
5300 Transfers Out to Component Units/Primary Governments					
Total Other Financing Sources (Uses)					

Amounts Expressed in Whole Dollars	<u>Capital Reserve (690.1850)</u> <u>(31)</u>	<u>Capital Reserve (1431)</u> <u>(32)</u>	<u>Other Capital Projects</u> <u>Fund</u> <u>(39)</u>	<u>Debt Service</u> <u>(40)</u>	<u>Permanent</u> <u>(90)</u>
Revenues					
6000 Revenue from Local Sources		3,812	422		
7000 Revenue from State Sources					
8000 Revenue from Federal Sources					
Total Revenues		\$3,812	\$422		
Expenditures					
1000 Instruction					
2000 Support Services		247,528			
3000 Operation of Non-Instructional Services					
4000 Facilities Acquisition, Construction and Improvement Services		732,781	11,829		
5110 Debt Service					
5130 Refund of Prior Year Revenues / Receipts					
5140 Leases					
Total Expenditures		\$980,309	\$11,829		
Excess (Deficiency) Of Revenues Over Expenditures		(\$976,497)	(\$11,407)		
Other Financing Sources (Uses)					
9110 Face Value of Bonds Issued					
9120 Proceeds from Refunding of Bonds					
9130 Bond Premiums					
9200 Proceeds from Extended-Term Financing and Leases					
9300 Interfund Transfers - IN					
9400 Sale of or Compensation for Loss of Fixed Assets					
9710 Transfers from Component Units					
9720 Transfers from Primary Governments					
9910 Other Financing Sources Not Listed in the 9000 Series					
9990 Insurance Recoveries					
5120 Debt Service – Refunded Bonds					
5150 Bond Discounts					
5200 Interfund Transfers – Out					
5300 Transfers Out to Component Units/Primary Governments					
Total Other Financing Sources (Uses)					

Amounts Expressed in Whole Dollars	<u>Total Governmental Funds</u>
Revenues	
6000 Revenue from Local Sources	84,489,395
7000 Revenue from State Sources	18,905,608
8000 Revenue from Federal Sources	2,925,910
Total Revenues	\$106,320,913
Expenditures	
1000 Instruction	55,217,772
2000 Support Services	30,354,138
3000 Operation of Non-Instructional Services	2,596,605
4000 Facilities Acquisition, Construction and Improvement Services	749,615
5110 Debt Service	10,471,398
5130 Refund of Prior Year Revenues / Receipts	
5140 Leases	
Total Expenditures	\$99,389,528
Excess (Deficiency) Of Revenues Over Expenditures	\$6,931,385
Other Financing Sources (Uses)	
9110 Face Value of Bonds Issued	
9120 Proceeds from Refunding of Bonds	
9130 Bond Premiums	
9200 Proceeds from Extended-Term Financing and Leases	
9300 Interfund Transfers - IN	
9400 Sale of or Compensation for Loss of Fixed Assets	
9710 Transfers from Component Units	
9720 Transfers from Primary Governments	
9910 Other Financing Sources Not Listed in the 9000 Series	
9990 Insurance Recoveries	
5120 Debt Service – Refunded Bonds	
5150 Bond Discounts	
5200 Interfund Transfers – Out	
5300 Transfers Out to Component Units/Primary Governments	
Total Other Financing Sources (Uses)	

Amounts Expressed in Whole Dollars	<u>General Fund</u> <u>(10)</u>	<u>Student Sponsored</u> <u>Activity Fund</u> <u>(21)</u>	<u>Public Purpose Trust</u> <u>(27)</u>	<u>Other Compt Approved</u> <u>(28)</u>	<u>Athletic / Activity</u> <u>(29)</u>
Special And Extraordinary Items					
9920 Special Items – Gains					
9930 Extraordinary Items – Gains					
5520 Special Items – Losses					
5530 Extraordinary Items – Losses					
Net Change In Fund Balances	\$7,919,289				
Fund Balance					
0001 Fund Balance - Beginning of Fiscal Year	18,380,170				
Fund Balance - End Of Year	\$26,299,459				

Amounts Expressed in Whole Dollars	<u>Capital Reserve (690.</u> <u>1850</u> <u>(31)</u>	<u>Capital Reserve (1431</u> <u>(32)</u>	<u>Other Capital Projects</u> <u>Fund</u> <u>(39)</u>	<u>Debt Service</u> <u>(40)</u>	<u>Permanent</u> <u>(90)</u>
Special And Extraordinary Items					
9920 Special Items – Gains					
9930 Extraordinary Items – Gains					
5520 Special Items – Losses					
5530 Extraordinary Items – Losses					
Net Change In Fund Balances		(\$976,497)	(\$11,407)		
Fund Balance					
0001 Fund Balance - Beginning of Fiscal Year		2,475,084	(173,163)		
Fund Balance - End Of Year		\$1,498,587	(\$184,570)		

Amounts Expressed in Whole Dollars	<u>Total Governmental Funds</u>
Special And Extraordinary Items	
9920 Special Items – Gains	
9930 Extraordinary Items – Gains	
5520 Special Items – Losses	
5530 Extraordinary Items – Losses	
Net Change In Fund Balances	\$6,931,385
Fund Balance	
0001 Fund Balance - Beginning of Fiscal Year	20,682,091
Fund Balance - End Of Year	\$27,613,476

Amounts Expressed in Whole Dollars	<u>Food Service</u> <u>(51)</u>	<u>Child Care</u> <u>Operations</u> <u>(52)</u>	<u>Other Enterprise</u> <u>(58)</u>	<u>TOTAL</u>	<u>Internal Service</u> <u>(60)</u>
Assets And Deferred Outflows Of Resources					
Current Assets					
0100 Cash and Cash Equivalents	1,105,459			1,105,459	
0110 Investments					
0130 Due From Other Funds	1,227			1,227	
0141 Due From Other Governments					
0142 State Revenue Receivable	2,545			2,545	
0143 Federal Revenue Receivable	82,323			82,323	
0146 Due from Primary Government					
0147 Due from Component Unit					
0150 Other Receivables					
0170 Inventories	15,901			15,901	
0180 Prepaid Expenses (Expenditures)					
0190 Other Current Assets					
Total Current Assets	\$1,207,455			\$1,207,455	
Noncurrent Assets					
0211 Land					
0212 Site Improvements (Net)					
0220 Buildings and Building Improvements (Net)					
0230 Machinery, Equipment and Furniture (Net)	189,123			189,123	
0250 Construction in Progress					
0260 Long Term Prepayments					
0290 Other Noncurrent Assets					
Total Noncurrent Assets	\$189,123			\$189,123	
0910 Deferred Outflows of Resources					
Total Assets And Deferred Outflows Of Resources	\$1,396,578			\$1,396,578	

Amounts Expressed in Whole Dollars	<u>Food Service</u> <u>(51)</u>	<u>Child Care</u> <u>Operations</u> <u>(52)</u>	<u>Other Enterprise</u> <u>(58)</u>	<u>TOTAL</u>	<u>Internal Service</u> <u>(60)</u>
Liabilities And Deferred Inflows Of Resources And Net Position					
Current Liabilities					
0400 Due to Other Funds	13,346			13,346	
0411 Due to Other Governments					
0413 Due to Component Unit					
0420 Accounts Payable	265,559			265,559	
0430 Contracts Payable					
0440 Current Portion of Long-Term Debt					
0450 Short-Term Payables					
0461 Accrued Salaries and Benefits					
0462 Payroll Deductions and Withholding					
0480 Unearned Revenues	91,883			91,883	
0490 Other Current Liabilities					
Total Current Liabilities	\$370,788			\$370,788	
Noncurrent Liabilities					
0510 Bonds Payable					
0520 Extended-Term Financing Agreements Payable					
0530 Lease Obligations					
0540 Accumulated Compensated Absences					
0550 Authority Lease Obligations					
0560 Other Post-Employment Benefits (OPEB)					
0570 Net Pension Liability					
0599 Other Noncurrent Liabilities					
Total Noncurrent Liabilities					
Total Liabilities	\$370,788			\$370,788	
0950 Deferred Inflows of Resources					
Net Position					
0791 Net Investment in Capital Assets	189,123			189,123	
0008 Restricted Net Position (0792 – 0798)					
0799 Unrestricted Net Position	836,667			836,667	
Total Net Position	\$1,025,790			\$1,025,790	
Total Liabilities And Deferred Inflows Of Resources And Net Position	\$1,396,578			\$1,396,578	

Amounts Expressed in Whole Dollars	<u>Food Service</u> <u>(51)</u>	<u>Child Care Operations</u> <u>(52)</u>	<u>Other Enterprise</u> <u>(58)</u>	<u>TOTAL</u>	<u>Internal Service</u> <u>(60)</u>
Operating Revenues					
6600 Food Service Revenue	110,411			110,411	
0071 Charges for Services					
0072 Other Operating Revenue					
Total Operating Revenues	\$110,411			\$110,411	
Operating Expenses					
100 Personnel Services – Salaries	40,025			40,025	
200 Personnel Services – Employee Benefits					
300 Purchased Professional and Technical Services	6,777			6,777	
400 Purchased Property Services					
500 Other Purchased Services	1,696,496			1,696,496	
600 Supplies	126,095			126,095	
740 Depreciation	50,982			50,982	
810 Dues and Fees	2,872			2,872	
880 Refunds of Prior Years' Receipts					
890 Miscellaneous Expenditures					
Total Operating Expenses	\$1,923,247			\$1,923,247	
Operating Income (Loss)	(\$1,812,836)			(\$1,812,836)	
Non Operating Revenues (Expenses)					
6500 Earnings on Investments	774			774	
6920 Contributions and Donations from Private Sources					
6930 Gains or Losses on Sale of Fixed Assets					
6991 Refunds of a Prior Year Expenditure					
7000 Revenue from State Sources	64,235			64,235	
8000 Revenue from Federal Sources	2,442,711			2,442,711	
9990 Insurance Recoveries					
820 Claims and Judgments Against the LEA					
830 Interest					
TOTAL Non Operating Revenues (Expenses)	\$2,507,720			\$2,507,720	
Income (Loss) Before Contributions And Transfers	\$694,884			\$694,884	

Amounts Expressed in Whole Dollars	<u>Food Service</u> <u>(51)</u>	<u>Child Care Operations</u> <u>(52)</u>	<u>Other Enterprise</u> <u>(58)</u>	<u>TOTAL</u>	<u>Internal Service</u> <u>(60)</u>
Contributions, Transfers, and Special and Extraordinary Items					
5200 Interfund Transfers – Out					
5300 Transfers Out to Component Units/Primary Governments					
5520 Special Items – Losses					
5530 Extraordinary Items – Losses					
9300 Interfund Transfers - IN					
9500 Capital Contributions					
9700 Transfers IN From Component Units/Primary Governments					
9920 Special Items – Gains					
9930 Extraordinary Items – Gains					
Change In Net Position	\$694,884			\$694,884	
0002 Net Position - Beginning of Fiscal Year	330,906			330,906	
0003 Accounting Changes / Residual Equity Transfers					
Net Position - End Of Year	\$1,025,790			\$1,025,790	

Amounts Expressed in Whole Dollars	<u>Food Service</u> <u>(51)</u>	<u>Child Care Operations</u> <u>(52)</u>	<u>Other Enterprise</u> <u>(58)</u>	<u>TOTAL</u>	<u>Internal Service(60)</u>
Cash Flows From Operating Activities					
0011 Cash Receipts From Users	98,017			98,017	
0012 Cash Receipts From Assessments Made to Other Funds					
0013 Cash Receipts From Earnings on Investments					
0014 Cash Receipts From Other Operating Revenue					
0015 Cash Payments To Employees For Services	40,025			40,025	
0016 Cash Payments For Insurance Claims					
0017 Cash Payments To Suppliers For Goods and Services	1,741,519			1,741,519	
0018 Cash Payments For Other Operating Expenses					
Net Cash Provided By (Used For) Operating Activities	(\$1,683,527)			(\$1,683,527)	
Cash Flows From Non-Capital Financing Activities					
0021 Receipts From Local Sources - 6000					
0022 Receipts From State Sources - 7000	61,689			61,689	
0023 Receipts From Federal Sources -8000	2,241,308			2,241,308	
0024 Notes and Loans Received (Repaid)					
0025 Interest Paid on Notes/Loans - 5100-830					
0026 Operating Transfers In (Out)/Residual Equity Trans					
0027 Operating Transfers In (Out) Primary Government / Comp Unit					
0028 Receipts From Refund of Prior Year Expenditures - 6991					
0029 Special and Extraordinary Gains (losses)					
0030 Receipts from Insurance Recoveries -9990					
Net Cash Prov By (Used for) Non-Capital Financing Activities	\$2,302,997			\$2,302,997	
Cash Flows From Capital and Related Financing Activities					
0031 Payments For Fac Acq, Const, and Imp - 4000					
0032 Gain / (Loss) on Sale of Fixed Assets - 6930					
0033 Proceeds From Extended Term Financing - 9200					
0034 Principal Paid on Financing Agreements					
0035 Interest Paid on Financing Agreements - 5100-830					
0036 (Inc) Dec in Contributed Capital					
Net Cash Prov By (Used for) Capital and Related Financing Activities					
Cash Flows From Investing Activities					
0041 Earnings on Investments - 6500	774			774	
0042 Purchase of Inv Securities / Deposits to Inv Pools					
0043 Receipts From Investment Pool Withdrawals					
0044 Proceeds from Sale and Maturity of Inv Securities					

LEA : 124157203 Phoenixville Area SD

Printed 12/19/2022 9:30:05 AM

0045 Loans Received (Paid)

Net Cash Prov By (Used for) Investing Activities	\$774	\$774
---	--------------	--------------

	<u>Food Service</u> <u>(51)</u>	<u>Child Care Operations</u> <u>(52)</u>	<u>Other Enterprise</u> <u>(58)</u>	<u>TOTAL</u>	<u>Internal Service</u> <u>(60)</u>
Net Increase (Decrease) in Cash Flows	620,244			620,244	
0004 Cash and Cash Equivalents Beginning of Year	485,215			485,215	
Cash and Cash Equivalents at Year End	\$1,105,459			\$1,105,459	

Reconciliation of Operating Income (Loss) To Net Cash Provided by (Used For) Operating Activities

0005 Operating Income (Loss) per REP	(1,812,836)			(1,812,836)	
Adjustments					
0051 Depreciation and Net Amortization	50,982			50,982	
0052 Provision for Uncollectible Accounts					
0053 Other Adjustments	119,080			119,080	
Effect of Changes in Assets, Liabilities, Deferred Outflows and Deferred Inflows					
0054 (Inc) Dec In Accounts Receivable (0120-0150)					
0055 Advances to Other Funds (0160)					
0056 (Inc) Dec in Inventories (0170)	7,852			7,852	
0057 (Inc) Dec in Prepaid Expenses (0180)					
0058 (Inc) Dec in Other Current or Noncurrent Assets	(1,227)			(1,227)	
0064 Deferred Outflows (0910)					
0059 Inc (Dec) in Accounts Payable (0400-0450)	(48,331)			(48,331)	
0060 Inc (Dec) in Accrued Salaries/Benefits (0461)					
0065 Inc (Dec) in Net Pension Liabilities (0570)					
0066 Inc (Dec) in Other Postemp Benefit Oblig (0560)					
0061 Inc (Dec) in Payroll Deductions/Withholding (0462)					
0062 Inc (Dec) in Unearned Revenue (0480)	(12,394)			(12,394)	
0063 Inc (Dec) in Other Current or Noncurrent Liabilities	13,346			13,346	
0067 Deferred Inflows (0950)					
Total Adjustments	\$129,308			\$129,308	
Cash Provided By (Used for) Total	(\$1,683,528)			(\$1,683,528)	

**COMBINED STATEMENT OF CASH FLOWS
SCHEDULE OF NONCASH INVESTING, CAPITAL, AND FINANCING ACTIVITIES**

Explanation of Transaction and Balance Sheet Effect	Amount
Total	

LEA : 124157203 Phoenixville Area SD

Printed 12/19/2022 9:30:06 AM

Amounts Expressed in Whole Dollars

Private Purpose Trust
(71)

Investment Trust
(72)

Pension Trust
(73)

Student Activity Custodial
(81)

Assets And Deferred Outflows Of Resources

Assets

0100 Cash and Cash Equivalents	14,985			291,044
0110 Investments				
0130 Due From Other Funds				
0140 Due from Other Governments, Primary Government and Component Units				
0150 Other Receivables				
0170 Inventories				
0180 Prepaid Expenses (Expenditures)				
0190 Other Current Assets				
0220 Buildings and Building Improvements (Net)				
0230 Machinery, Equipment and Furniture (Net)				

Total Assets	\$14,985			\$291,044
---------------------	-----------------	--	--	------------------

0910 Deferred Outflows of Resources

Total Assets And Deferred Outflows Of Resources	\$14,985			\$291,044
--	-----------------	--	--	------------------

LEA : 124157203 Phoenixville Area SD

Printed 12/19/2022 9:30:06 AM

Amounts Expressed in Whole Dollars	<u>Other Custodial</u> <u>(89)</u>	<u>Fiduciary Component Units</u> <u>(98)</u>	<u>Total Fiduciary Funds</u>
Assets And Deferred Outflows Of Resources			
Assets			
0100 Cash and Cash Equivalents			306,029
0110 Investments			
0130 Due From Other Funds			
0140 Due from Other Governments, Primary Government and Component Units			
0150 Other Receivables			
0170 Inventories			
0180 Prepaid Expenses (Expenditures)			
0190 Other Current Assets			
0220 Buildings and Building Improvements (Net)			
0230 Machinery, Equipment and Furniture (Net)			
Total Assets			\$306,029
0910 Deferred Outflows of Resources			
Total Assets And Deferred Outflows Of Resources			\$306,029

LEA : 124157203 Phoenixville Area SD

Printed 12/19/2022 9:30:06 AM

Amounts Expressed in Whole Dollars

Private Purpose Trust
(71)

Investment Trust
(72)

Pension Trust
(73)

Student Activity Custodial
(81)

Liabilities, Deferred Inflows Of Resources And Net Position

Liabilities

- 0400 Due to Other Funds
- 0410 Due to Other Governments, Primary Government and Component Units
- 0420 Accounts Payable
- 0430 Contracts Payable
- 0450 Short-Term Payables
- 0460 Payroll Accruals and Withholdings
- 0480 Unearned Revenues
- 0490 Other Current Liabilities

Total Liabilities

- 0950 Deferred Inflows of Resources

Net Position

0791 Net Investment in Capital Assets		
0009 Restricted Net Position (0792 – 0798)	14,985	291,044
0799 Unrestricted Net Position		

Total Net Position	\$14,985	\$291,044
Total Liabilities, Deferred Inflows Of Resources And Net Position	\$14,985	\$291,044

LEA : 124157203 Phoenixville Area SD

Printed 12/19/2022 9:30:06 AM

Amounts Expressed in Whole Dollars	<u>Other Custodial</u> <u>(89)</u>	<u>Fiduciary Component Units</u> <u>(98)</u>	<u>Total Fiduciary Funds</u>
Liabilities, Deferred Inflows Of Resources And Net Position			
Liabilities			
0400 Due to Other Funds			
0410 Due to Other Governments, Primary Government and Component Units			
0420 Accounts Payable			
0430 Contracts Payable			
0450 Short-Term Payables			
0460 Payroll Accruals and Withholdings			
0480 Unearned Revenues			
0490 Other Current Liabilities			
Total Liabilities			
0950 Deferred Inflows of Resources			
Net Position			
0791 Net Investment in Capital Assets			
0009 Restricted Net Position (0792 – 0798)			306,029
0799 Unrestricted Net Position			
Total Net Position			\$306,029
Total Liabilities, Deferred Inflows Of Resources And Net Position			\$306,029

Amounts Expressed in Whole Dollars	<u>Private Purpose Trust</u> (71)	<u>Investment Trust</u> (72)	<u>Pension Trust</u> (73)	<u>Student Activity</u> <u>Custodial</u> (81)	<u>Other Custodial</u> (89)	<u>Fiduciary Component</u> <u>Units</u> (98)
Additions						
0091 Gifts and Contributions						
0095 Net Investment Earnings	311			273		
0092 Other Additions				408,174		
Deductions						
0093 Scholarships Awarded						
0094 Other Deductions				336,303		
Change In Net Position	\$311			\$72,144		
0006 Net Position – Beginning of Fiscal Year	14,674			218,900		
0007 Net Position Held in Trust for Pension Benefits						
Net Position - End of Fiscal Year	\$14,985			\$291,044		

Amounts Expressed in Whole Dollars	<u>Total Fiduciary Funds</u>
Additions	
0091 Gifts and Contributions	
0095 Net Investment Earnings	584
0092 Other Additions	408,174
Deductions	
0093 Scholarships Awarded	
0094 Other Deductions	336,303
Change in Net Position	\$72,455
0006 Net Position – Beginning of Fiscal Year	233,574
0007 Net Position Held in Trust for Pension Benefits	
Net Position - End of Fiscal Year	\$306,029

	<u>Revenue Reported In Current Year</u>	<u>Current Year Tax Accrual</u>	<u>Prior Year Tax Accrual</u>	<u>Taxes Collected In Current Year</u>
<u>Revenue from Local Sources</u>				
6111 Current Real Estate Taxes	65,620,570.27			65,620,570.27
6112 Interim Real Estate Taxes	1,200,101.15			1,200,101.15
6113 Public Utility Realty Taxes	75,104.20			75,104.20
6141 Current Act 511 Per Capita Taxes	166,771.25			166,771.25
6151 Current Act 511 Earned Income Taxes	8,619,989.92			8,619,989.92
6152 Current Act 511 Occupation Taxes	1,666,229.01			1,666,229.01
6153 Current Act 511 Real Estate Transfer Taxes	2,414,162.45			2,414,162.45
6411 Delinquent Real Estate Taxes	1,729,487.50			1,729,487.50
6440 Delinquent Local Enabling Taxes - Flat Rate Assessments	1,227,755.22			1,227,755.22
6500 Earnings on Investments	180,853.27			
6700 Revenues from LEA Activities	79,155.00			
6832 Federal IDEA Revenue Received as Pass Through	526,522.13			
6833 Federal ARRA IDEA Revenue Received as Pass Through	126,419.71			
6910 Rentals	278,964.59			
6920 Contributions and Donations from Private Sources	16,619.40			
6941 Regular Day School Tuition	8,186.41			
6942 Summer School Tuition	4,600.00			
6944 Receipts from Other LEAs in Pennsylvania - Education	683.04			
6991 Refunds of a Prior Year Expenditure	415,599.73			
6992 Energy Efficiency Revenues and Incentives	16,660.45			
6999 Other Revenues Not Specified Above	110,726.03			
TOTAL Revenue from Local Sources	\$84,485,160.73			\$82,720,170.97

**Revenue Reported
In Current Year**

Revenue from State Sources

7111 Basic Education Funding-Formula	5,429,495.95		
7112 Basic Education Funding-Social Security	1,434,920.84		
7160 Tuition for Orphans Subsidy	41,284.75		
7271 Special Education funds for School-Aged Pupils	1,819,833.59		
7311 Pupil Transportation Subsidy	788,423.55		
7312 Nonpublic and Charter School Pupil Transportation Subsidy	158,235.00		
7320 Rental and Sinking Fund Payments / Building Reimbursement Subsidy	727,187.49		
7330 Health Services (Medical, Dental, Nurse, Act 25)	74,746.32		
7340 State Property Tax Reduction Allocation	1,411,634.81		
7505 Ready to Learn Block Grant	127,795.00		
7599 Other State Revenue Not Listed Elsewhere in the 7000 Series	902.62		
7820 State Share of Retirement Contributions	6,891,147.67		
TOTAL Revenue from State Sources	\$18,905,607.59		

	Revenue Reported In Current Year			
Revenue from Federal Sources				
8514 NCLB, Title I - Improving the Academic Achievement of the Disadvantaged	526,850.00			
8515 NCLB, Title II - Preparing, Training and Recruiting High Quality Teachers and Principals	101,096.03			
8516 NCLB, Title III - Language Instruction for Limited English Proficient and Immigrant Students	79,131.00			
8517 NCLB, Title IV - 21St Century Schools	33,249.00			
8741 Elementary and Secondary School Emergency Relief Fund (ESSER)	112,378.06			
8742 Governor's Emergency Education Relief Fund (GEER)	20,964.20			
8743 ESSER II - Elementary and Secondary School Emergency Relief Fund	591,587.24			
8744 ARP ESSER - Elementary and Secondary School Emergency Relief Fund	1,282,693.96			
8751 ARP ESSER Learning Loss	73,267.72			
8752 ARP ESSER Summer Programs	19,832.01			
8753 ARP ESSER Afterschool Programs	15,067.50			
8754 ARP ESSER Homeless Children and Youth Funds	29,355.00			
8810 School-Based Access Medicaid Reimbursement Program (SBAP) Reimbursements (Access)	26,623.37			
8820 Medical Assistance Reimbursement for Administrative Claiming (Quarterly) Program	13,815.20			
TOTAL Revenue from Federal Sources	\$2,925,910.29			
TOTAL FROM ALL SOURCES	\$106,316,678.61			\$82,720,170.97

	<u>General Fund (10)</u>	<u>Student Sponsored Activity Fund (21)</u>	<u>Public Purpose Trust (27)</u>	<u>Other Compt Approved (28)</u>	<u>Athletic / Activity (29)</u>	<u>Capital Reserve (690, 1850) (31)</u>
6000 Revenue from Local Sources						
6111 Current Real Estate Taxes	65,620,570.27					
6112 Interim Real Estate Taxes	1,200,101.15					
6113 Public Utility Realty Taxes	75,104.20					
6141 Current Act 511 Per Capita Taxes	166,771.25					
6151 Current Act 511 Earned Income Taxes	8,619,989.92					
6152 Current Act 511 Occupation Taxes	1,666,229.01					
6153 Current Act 511 Real Estate Transfer Taxes	2,414,162.45					
6411 Delinquent Real Estate Taxes	1,729,487.50					
6440 Delinquent Local Enabling Taxes - Flat Rate Assessments	1,227,755.22					
6500 Earnings on Investments	180,853.27					
6700 Revenues from LEA Activities	79,155.00					
6832 Federal IDEA Revenue Received as Pass Through	526,522.13					
6833 Federal ARRA IDEA Revenue Received as Pass Through	126,419.71					
6910 Rentals	278,964.59					
6920 Contributions and Donations from Private Sources	16,619.40					
6941 Regular Day School Tuition	8,186.41					
6942 Summer School Tuition	4,600.00					
6944 Receipts from Other LEAs in Pennsylvania - Education	683.04					
6991 Refunds of a Prior Year Expenditure	415,599.73					
6992 Energy Efficiency Revenues and Incentives	16,660.45					
6999 Other Revenues Not Specified Above	110,726.03					
6000 Total Revenue from Local Sources	\$84,485,160.73					
7000 Revenue from State Sources						
7111 Basic Education Funding-Formula	5,429,495.95					
7112 Basic Education Funding-Social Security	1,434,920.84					
7160 Tuition for Orphans Subsidy	41,284.75					
7271 Special Education funds for School-Aged Pupils	1,819,833.59					
7311 Pupil Transportation Subsidy	788,423.55					
7312 Nonpublic and Charter School Pupil Transportation Subsidy	158,235.00					
7320 Rental and Sinking Fund Payments / Building Reimbursement Subsidy	727,187.49					
7330 Health Services (Medical, Dental, Nurse, Act 25)	74,746.32					
7340 State Property Tax Reduction Allocation	1,411,634.81					
7505 Ready to Learn Block Grant	127,795.00					
7599 Other State Revenue Not Listed Elsewhere in the 7000 Series	902.62					

	<u>Capital Reserve</u> <u>(1431) (32)</u>	<u>Other Capital</u> <u>Projects Fund (39)</u>	<u>Debt Service (40)</u>	<u>Permanent (90)</u>	<u>Total</u>
6000 Revenue from Local Sources					
6111 Current Real Estate Taxes					65,620,570.27
6112 Interim Real Estate Taxes					1,200,101.15
6113 Public Utility Realty Taxes					75,104.20
6141 Current Act 511 Per Capita Taxes					166,771.25
6151 Current Act 511 Earned Income Taxes					8,619,989.92
6152 Current Act 511 Occupation Taxes					1,666,229.01
6153 Current Act 511 Real Estate Transfer Taxes					2,414,162.45
6411 Delinquent Real Estate Taxes					1,729,487.50
6440 Delinquent Local Enabling Taxes - Flat Rate Assessments					1,227,755.22
6500 Earnings on Investments	3,812.21	421.80			185,087.28
6700 Revenues from LEA Activities					79,155.00
6832 Federal IDEA Revenue Received as Pass Through					526,522.13
6833 Federal ARRA IDEA Revenue Received as Pass Through					126,419.71
6910 Rentals					278,964.59
6920 Contributions and Donations from Private Sources					16,619.40
6941 Regular Day School Tuition					8,186.41
6942 Summer School Tuition					4,600.00
6944 Receipts from Other LEAs in Pennsylvania - Education					683.04
6991 Refunds of a Prior Year Expenditure					415,599.73
6992 Energy Efficiency Revenues and Incentives					16,660.45
6999 Other Revenues Not Specified Above					110,726.03
6000 Total Revenue from Local Sources	\$3,812.21	\$421.80			\$84,489,394.74
7000 Revenue from State Sources					
7111 Basic Education Funding-Formula					5,429,495.95
7112 Basic Education Funding-Social Security					1,434,920.84
7160 Tuition for Orphans Subsidy					41,284.75
7271 Special Education funds for School-Aged Pupils					1,819,833.59
7311 Pupil Transportation Subsidy					788,423.55
7312 Nonpublic and Charter School Pupil Transportation Subsidy					158,235.00
7320 Rental and Sinking Fund Payments / Building Reimbursement Subsidy					727,187.49
7330 Health Services (Medical, Dental, Nurse, Act 25)					74,746.32
7340 State Property Tax Reduction Allocation					1,411,634.81
7505 Ready to Learn Block Grant					127,795.00
7599 Other State Revenue Not Listed Elsewhere in the 7000 Series					902.62

	<u>General Fund (10)</u>	<u>Student Sponsored Activity Fund (21)</u>	<u>Public Purpose Trust (27)</u>	<u>Other Compt Approved (28)</u>	<u>Athletic / Activity (29)</u>	<u>Capital Reserve (690.1850) (31)</u>
7000 Revenue from State Sources						
7820 State Share of Retirement Contributions	6,891,147.67					
7000 Total Revenue from State Sources	\$18,905,607.59					
8000 Revenue from Federal Sources						
8514 NCLB, Title I - Improving the Academic Achievement of the Disadvantaged	526,850.00					
8515 NCLB, Title II - Preparing, Training and Recruiting High Quality Teachers and Principals	101,096.03					
8516 NCLB, Title III - Language Instruction for Limited English Proficient and Immigrant Students	79,131.00					
8517 NCLB, Title IV - 21st Century Schools	33,249.00					
8741 Elementary and Secondary School Emergency Relief Fund (ESSER)	112,378.06					
8742 Governor's Emergency Education Relief Fund (GEER)	20,964.20					
8743 ESSER II - Elementary and Secondary School Emergency Relief Fund	591,587.24					
8744 ARP ESSER - Elementary and Secondary School Emergency Relief Fund	1,282,693.96					
8751 ARP ESSER Learning Loss	73,267.72					
8752 ARP ESSER Summer Programs	19,832.01					
8753 ARP ESSER Afterschool Programs	15,067.50					
8754 ARP ESSER Homeless Children and Youth Funds	29,355.00					
8810 School-Based Access Medicaid Reimbursement Program (SBAP) Reimbursements (Access)	26,623.37					
8820 Medical Assistance Reimbursement for Administrative Claiming (Quarterly) Program	13,815.20					
8000 Total Revenue from Federal Sources	\$2,925,910.29					
Total From All Sources	\$106,316,678.61					

	<u>Capital Reserve</u> <u>(1431) (32)</u>	<u>Other Capital</u> <u>Projects Fund (39)</u>	<u>Debt Service (40)</u>	<u>Permanent (90)</u>	<u>Total</u>
7000 Revenue from State Sources					
7820 State Share of Retirement Contributions					6,891,147.67
7000 Total Revenue from State Sources					\$18,905,607.59
8000 Revenue from Federal Sources					
8514 NCLB, Title I - Improving the Academic Achievement of the Disadvantaged					526,850.00
8515 NCLB, Title II - Preparing, Training and Recruiting High Quality Teachers and Principals					101,096.03
8516 NCLB, Title III - Language Instruction for Limited English Proficient and Immigrant Students					79,131.00
8517 NCLB, Title IV - 21st Century Schools					33,249.00
8741 Elementary and Secondary School Emergency Relief Fund (ESSER)					112,378.06
8742 Governor's Emergency Education Relief Fund (GEER)					20,964.20
8743 ESSER II - Elementary and Secondary School Emergency Relief Fund					591,587.24
8744 ARP ESSER - Elementary and Secondary School Emergency Relief Fund					1,282,693.96
8751 ARP ESSER Learning Loss					73,267.72
8752 ARP ESSER Summer Programs					19,832.01
8753 ARP ESSER Afterschool Programs					15,067.50
8754 ARP ESSER Homeless Children and Youth Funds					29,355.00
8810 School-Based Access Medicaid Reimbursement Program (SBAP) Reimbursements (Access)					26,623.37
8820 Medical Assistance Reimbursement for Administrative Claiming (Quarterly) Program					13,815.20
8000 Total Revenue from Federal Sources					\$2,925,910.29
Total From All Sources	\$3,812.21	\$421.80			\$106,320,912.62

	<u>General Fund (10)</u>	<u>Student Sponsored Activity Fund (21)</u>	<u>Public Purpose Trust (27)</u>	<u>Other Compt Approved (28)</u>	<u>Athletic / Activity (29)</u>	<u>Capital Reserve (690.1850) (31)</u>
Revenue from Local Sources	84,485,160.73					
Revenue from State Sources	18,905,607.59					
Revenue from Federal Sources	2,925,910.29					
Total From All Sources	\$106,316,678.61					

	<u>Capital Reserve (1431)</u> <u>(32)</u>	<u>Other Capital Projects</u> <u>Fund (39)</u>	<u>Debt Service (40)</u>	<u>Permanent (90)</u>	<u>Total</u>
Revenue from Local Sources	3,812.21	421.80			84,489,394.74
Revenue from State Sources					18,905,607.59
Revenue from Federal Sources					2,925,910.29
Total From All Sources	\$3,812.21	\$421.80			\$106,320,912.62

General Fund (10)

	<u>Total</u>
1000 Instruction	
100 Personnel Services – Salaries	
100 Personnel Services – Salaries	26,631,103.53
Total Personnel Services – Salaries	\$26,631,103.53
200 Personnel Services – Employee Benefits	
210 Group Insurance – Contracted Provider	2,141,589.07
220 Social Security Contributions	1,961,029.83
230 PSERS Retirement Contributions	9,056,571.43
250 Unemployment Compensation	180,697.97
270 Group Insurance – Self-Insurance	3,281,816.56
291 Other Retirement Plans	1,250.00
292 Health Savings Accounts	2,580.00
Total Personnel Services – Employee Benefits	\$16,625,534.86
300 Purchased Professional and Technical Services	
322 Professional Educational Services – Ius	1,737,947.85
329 Professional Educational Services – Other	783,821.28
330 Other Professional Services	450,067.60
350 Security / Safety Services	192.00
Total Purchased Professional and Technical Services	\$2,972,028.73
400 Purchased Property Services	
430 Repairs and Maintenance Services	101,816.84
440 Rentals	478,798.89
Total Purchased Property Services	\$580,615.73
500 Other Purchased Services	
510 Student Transportation Services	16,323.06
530 Communications	86.73
550 Printing and Binding	5,683.40
561 Tuition To Other School Districts Within the State	78,747.05
562 Tuition To Pennsylvania Charter Schools	5,379,441.60
563 Tuition To Nonpublic Schools	438,367.21
564 Tuition To Career and Technology Centers	728,388.00
566 Tuition To Institutions of Higher Education and Technical Institutes	48,125.00
567 Tuition To Approved Private Schools (APS) and PA Chartered Schools for the Deaf and Blind	283,640.66
568 Tuition To Private Residential Rehabilitative Institutions (PRRI) [In-State] and Detention Centers	57,951.60
569 Tuition – Other	238,516.76
580 Travel	260.06
Total Other Purchased Services	\$7,275,531.13
600 Supplies	
610 General Supplies	261,955.23
630 Food	6,995.01
640 Books and Periodicals	185,247.23
650 Supplies & Fees – Technology Related	176,014.72
Total Supplies	\$630,212.19

General Fund (10)

1000 Instruction	<u>Total</u>
700 <u>Property</u>	
752 Capital Equipment – Original and Additional	12,104.40
756 Capitalized Technology Equipment – Original	158,295.64
766 Capitalized Technology Equipment – Replacement	317,140.00
Total Property	\$487,540.04
800 <u>Other Objects</u>	
810 Dues and Fees	2,084.00
890 Miscellaneous Expenditures	13,121.40
Total Other Objects	\$15,205.40
Total 1000 Instruction	\$55,217,771.61

General Fund (10)

1100 Regular Programs – Elementary / Secondary

	<u>Elementary</u>	<u>Secondary</u>	<u>Federal</u>	<u>Total</u>
100 Personnel Services – Salaries				
100 Personnel Services – Salaries	10,730,706.06	8,602,085.73	758,348.91	20,091,140.70
Total Personnel Services – Salaries	\$10,730,706.06	\$8,602,085.73	\$758,348.91	\$20,091,140.70
200 Personnel Services – Employee Benefits				
210 Group Insurance – Contracted Provider	877,327.20	610,209.84	14,963.71	1,502,500.75
220 Social Security Contributions	832,097.72	643,277.37	5,368.36	1,480,743.45
230 PSERS Retirement Contributions	3,927,039.98	3,017,800.32	25,470.31	6,970,310.61
270 Group Insurance – Self-Insurance	1,304,252.58	894,058.75	758.52	2,199,069.85
291 Other Retirement Plans	500.00	750.00		1,250.00
292 Health Savings Accounts			240.00	240.00
Total Personnel Services – Employee Benefits	\$6,941,217.48	\$5,166,096.28	\$46,800.90	\$12,154,114.66
300 Purchased Professional and Technical Services				
322 Professional Educational Services – Ius			338,242.76	338,242.76
329 Professional Educational Services – Other	366,597.87	250,915.83	500.00	618,013.70
330 Other Professional Services	1,542.35	1,350.23		2,892.58
350 Security / Safety Services			192.00	192.00
Total Purchased Professional and Technical Services	\$368,140.22	\$252,266.06	\$338,934.76	\$959,341.04
400 Purchased Property Services				
430 Repairs and Maintenance Services	46,279.41	49,020.43	5,670.00	100,969.84
440 Rentals	107,515.23	371,283.66		478,798.89
Total Purchased Property Services	\$153,794.64	\$420,304.09	\$5,670.00	\$579,768.73
500 Other Purchased Services				
510 Student Transportation Services	2,541.50	632.50		3,174.00
530 Communications		28.43	38.75	67.18
550 Printing and Binding	469.35	5,214.05		5,683.40
562 Tuition To Pennsylvania Charter Schools	2,276,099.85	1,559,078.58		3,835,178.43
563 Tuition To Nonpublic Schools		4,801.53		4,801.53
569 Tuition – Other		8,823.35		8,823.35
580 Travel	227.13			227.13
Total Other Purchased Services	\$2,279,337.83	\$1,578,578.44	\$38.75	\$3,857,955.02
600 Supplies				
610 General Supplies	71,904.13	100,341.18	17,867.74	190,113.05
630 Food	700.00	6,295.01		6,995.01
640 Books and Periodicals	91,646.39	79,226.89	6,671.21	177,544.49
650 Supplies & Fees – Technology Related	81,258.92	39,510.17	24,263.70	145,032.79
Total Supplies	\$245,509.44	\$225,373.25	\$48,802.65	\$519,685.34
700 Property				
752 Capital Equipment – Original and Additional		12,104.40		12,104.40
756 Capitalized Technology Equipment – Original	6,000.00		152,295.64	158,295.64
766 Capitalized Technology Equipment – Replacement	74,614.00	102,582.00	139,944.00	317,140.00
Total Property	\$80,614.00	\$114,686.40	\$292,239.64	\$487,540.04
800 Other Objects				

General Fund (10)

1100 Regular Programs – Elementary / Secondary	<u>Elementary</u>	<u>Secondary</u>	<u>Federal</u>	<u>Total</u>
800 Other Objects				
810 Dues and Fees	878.29	838.71	70.00	1,787.00
890 Miscellaneous Expenditures	490.72	10,423.00	160.00	11,073.72
Total Other Objects	\$1,369.01	\$11,261.71	\$230.00	\$12,860.72
Total 1100 Regular Programs – Elementary / Secondary	\$20,800,688.68	\$16,370,651.96	\$1,491,065.61	\$38,662,406.25

General Fund (10)

1110 Regular Programs

	<u>Elementary</u>	<u>Secondary</u>	<u>Federal</u>	<u>Total</u>
100 Personnel Services – Salaries				
100 Personnel Services – Salaries	10,730,706.06	8,602,085.73		19,332,791.79
Total Personnel Services – Salaries	\$10,730,706.06	\$8,602,085.73		\$19,332,791.79
200 Personnel Services – Employee Benefits				
210 Group Insurance – Contracted Provider	877,327.20	610,209.84		1,487,537.04
220 Social Security Contributions	832,097.72	643,277.37		1,475,375.09
230 PSERS Retirement Contributions	3,927,039.98	3,017,800.32		6,944,840.30
270 Group Insurance – Self-Insurance	1,304,252.58	894,058.75		2,198,311.33
291 Other Retirement Plans	500.00	750.00		1,250.00
Total Personnel Services – Employee Benefits	\$6,941,217.48	\$5,166,096.28		\$12,107,313.76
300 Purchased Professional and Technical Services				
329 Professional Educational Services – Other	366,597.87	250,915.83		617,513.70
330 Other Professional Services	1,542.35	1,350.23		2,892.58
Total Purchased Professional and Technical Services	\$368,140.22	\$252,266.06		\$620,406.28
400 Purchased Property Services				
430 Repairs and Maintenance Services	46,279.41	49,020.43		95,299.84
440 Rentals	107,515.23	371,283.66		478,798.89
Total Purchased Property Services	\$153,794.64	\$420,304.09		\$574,098.73
500 Other Purchased Services				
510 Student Transportation Services	2,541.50	632.50		3,174.00
530 Communications		28.43		28.43
550 Printing and Binding	469.35	5,214.05		5,683.40
562 Tuition To Pennsylvania Charter Schools	2,276,099.85	1,559,078.58		3,835,178.43
563 Tuition To Nonpublic Schools		4,801.53		4,801.53
569 Tuition – Other		8,823.35		8,823.35
580 Travel	227.13			227.13
Total Other Purchased Services	\$2,279,337.83	\$1,578,578.44		\$3,857,916.27
600 Supplies				
610 General Supplies	71,904.13	100,341.18		172,245.31
630 Food	700.00	6,295.01		6,995.01
640 Books and Periodicals	91,646.39	79,226.89		170,873.28
650 Supplies & Fees – Technology Related	81,258.92	39,510.17		120,769.09
Total Supplies	\$245,509.44	\$225,373.25		\$470,882.69
700 Property				
752 Capital Equipment – Original and Additional		12,104.40		12,104.40
756 Capitalized Technology Equipment – Original	6,000.00		121,599.39	127,599.39
766 Capitalized Technology Equipment – Replacement	74,614.00	102,582.00	139,944.00	317,140.00
Total Property	\$80,614.00	\$114,686.40	\$261,543.39	\$456,843.79
800 Other Objects				
810 Dues and Fees	878.29	838.71		1,717.00
890 Miscellaneous Expenditures	490.72	10,423.00		10,913.72

General Fund (10)

1110 Regular Programs

	<u>Elementary</u>	<u>Secondary</u>	<u>Federal</u>	<u>Total</u>
Total Other Objects	\$1,369.01	\$11,261.71		\$12,630.72
Total 1110 Regular Programs	\$20,800,688.68	\$16,370,651.96	\$261,543.39	\$37,432,884.03

General Fund (10)

1190 Federally-Funded Regular Programs

	<u>Elementary</u>	<u>Secondary</u>	<u>Federal</u>	<u>Total</u>
100 Personnel Services – Salaries				
100 Personnel Services – Salaries			758,348.91	758,348.91
Total Personnel Services – Salaries			\$758,348.91	\$758,348.91
200 Personnel Services – Employee Benefits				
210 Group Insurance – Contracted Provider			14,963.71	14,963.71
220 Social Security Contributions			5,368.36	5,368.36
230 PSERS Retirement Contributions			25,470.31	25,470.31
270 Group Insurance – Self-Insurance			758.52	758.52
292 Health Savings Accounts			240.00	240.00
Total Personnel Services – Employee Benefits			\$46,800.90	\$46,800.90
300 Purchased Professional and Technical Services				
322 Professional Educational Services – lus			338,242.76	338,242.76
329 Professional Educational Services – Other			500.00	500.00
350 Security / Safety Services			192.00	192.00
Total Purchased Professional and Technical Services			\$338,934.76	\$338,934.76
400 Purchased Property Services				
430 Repairs and Maintenance Services			5,670.00	5,670.00
Total Purchased Property Services			\$5,670.00	\$5,670.00
500 Other Purchased Services				
530 Communications			38.75	38.75
Total Other Purchased Services			\$38.75	\$38.75
600 Supplies				
610 General Supplies			17,867.74	17,867.74
640 Books and Periodicals			6,671.21	6,671.21
650 Supplies & Fees – Technology Related			24,263.70	24,263.70
Total Supplies			\$48,802.65	\$48,802.65
700 Property				
756 Capitalized Technology Equipment – Original			30,696.25	30,696.25
Total Property			\$30,696.25	\$30,696.25
800 Other Objects				
810 Dues and Fees			70.00	70.00
890 Miscellaneous Expenditures			160.00	160.00
Total Other Objects			\$230.00	\$230.00
Total 1190 Federally-Funded Regular Programs			\$1,229,522.22	\$1,229,522.22

General Fund (10)

1200 Special Programs – Elementary / Secondary	<u>Elementary</u>	<u>Secondary</u>	<u>Federal</u>	<u>Total</u>
100 Personnel Services – Salaries				
100 Personnel Services – Salaries	3,026,710.17	2,388,330.58		5,415,040.75
Total Personnel Services – Salaries	\$3,026,710.17	\$2,388,330.58		\$5,415,040.75
200 Personnel Services – Employee Benefits				
210 Group Insurance – Contracted Provider	329,140.00	252,946.44		582,086.44
220 Social Security Contributions	221,959.83	175,082.06		397,041.89
230 PSERS Retirement Contributions	1,048,639.57	826,837.43		1,875,477.00
270 Group Insurance – Self-Insurance	549,677.95	410,218.66		959,896.61
292 Health Savings Accounts	1,090.00	1,250.00		2,340.00
Total Personnel Services – Employee Benefits	\$2,150,507.35	\$1,666,334.59		\$3,816,841.94
300 Purchased Professional and Technical Services				
322 Professional Educational Services – lus	441,289.63	461,854.82	496,560.64	1,399,705.09
329 Professional Educational Services – Other	132,523.94	33,283.64		165,807.58
330 Other Professional Services	308,741.82	63,188.84	75,244.36	447,175.02
Total Purchased Professional and Technical Services	\$882,555.39	\$558,327.30	\$571,805.00	\$2,012,687.69
400 Purchased Property Services				
430 Repairs and Maintenance Services	743.50	103.50		847.00
Total Purchased Property Services	\$743.50	\$103.50		\$847.00
500 Other Purchased Services				
510 Student Transportation Services	776.25	983.25		1,759.50
530 Communications		19.55		19.55
561 Tuition To Other School Districts Within the State	3,530.40	68,342.00		71,872.40
562 Tuition To Pennsylvania Charter Schools	990,340.45	553,922.72		1,544,263.17
563 Tuition To Nonpublic Schools	433,565.68			433,565.68
567 Tuition To Approved Private Schools (APS) and PA Chartered Schools for the Deaf and Blind	283,640.66			283,640.66
568 Tuition To Private Residential Rehabilitative Institutions (PRRI) [In-State] and Detention Centers	7,681.60		50,270.00	57,951.60
569 Tuition – Other	(34,250.00)	64,713.35	181,230.06	211,693.41
580 Travel	32.93			32.93
Total Other Purchased Services	\$1,685,317.97	\$687,980.87	\$231,500.06	\$2,604,798.90
600 Supplies				
610 General Supplies	16,281.94	47,894.88	3,409.31	67,586.13
640 Books and Periodicals	430.07	1,618.26		2,048.33
650 Supplies & Fees – Technology Related	12,283.90	18,464.18		30,748.08
Total Supplies	\$28,995.91	\$67,977.32	\$3,409.31	\$100,382.54
800 Other Objects				
810 Dues and Fees	117.00	180.00		297.00
890 Miscellaneous Expenditures	59.00			59.00
Total Other Objects	\$176.00	\$180.00		\$356.00
Total 1200 Special Programs – Elementary / Secondary	\$7,775,006.29	\$5,369,234.16	\$806,714.37	\$13,950,954.82

General Fund (10)

1210 Life Skills Support

	<u>Elementary</u>	<u>Secondary</u>	<u>Federal</u>	<u>Total</u>
100 Personnel Services – Salaries				
100 Personnel Services – Salaries	256,800.74	860,550.76		1,117,351.50
Total Personnel Services – Salaries	\$256,800.74	\$860,550.76		\$1,117,351.50
200 Personnel Services – Employee Benefits				
210 Group Insurance – Contracted Provider	54,797.82	89,319.45		144,117.27
220 Social Security Contributions	18,571.44	63,372.13		81,943.57
230 PSERS Retirement Contributions	91,834.86	302,851.16		394,686.02
270 Group Insurance – Self-Insurance	74,462.04	130,307.56		204,769.60
292 Health Savings Accounts	490.00	250.00		740.00
Total Personnel Services – Employee Benefits	\$240,156.16	\$586,100.30		\$826,256.46
300 Purchased Professional and Technical Services				
322 Professional Educational Services – lus	79,613.10		23,883.93	103,497.03
329 Professional Educational Services – Other	99,538.17	21,887.03		121,425.20
Total Purchased Professional and Technical Services	\$179,151.27	\$21,887.03	\$23,883.93	\$224,922.23
500 Other Purchased Services				
510 Student Transportation Services	86.25	293.25		379.50
562 Tuition To Pennsylvania Charter Schools	990,340.45	553,922.72		1,544,263.17
580 Travel	32.93			32.93
Total Other Purchased Services	\$990,459.63	\$554,215.97		\$1,544,675.60
800 Other Objects				
810 Dues and Fees	117.00			117.00
Total Other Objects	\$117.00			\$117.00
Total 1210 Life Skills Support	\$1,666,684.80	\$2,022,754.06	\$23,883.93	\$3,713,322.79

General Fund (10)

1220 Sensory Support

	<u>Elementary</u>	<u>Secondary</u>	<u>Federal</u>	<u>Total</u>
300 <u>Purchased Professional and Technical Services</u>				
322 Professional Educational Services – Ius	8,380.26		68,374.69	76,754.95
330 Other Professional Services			13,489.42	13,489.42
Total Purchased Professional and Technical Services	\$8,380.26		\$81,864.11	\$90,244.37
600 <u>Supplies</u>				
610 General Supplies	22.99		3,409.31	3,432.30
650 Supplies & Fees – Technology Related	408.53	408.52		817.05
Total Supplies	\$431.52	\$408.52	\$3,409.31	\$4,249.35
Total 1220 Sensory Support	\$8,811.78	\$408.52	\$85,273.42	\$94,493.72

General Fund (10)

1230 Emotional Support

	<u>Elementary</u>	<u>Secondary</u>	<u>Federal</u>	<u>Total</u>
100 Personnel Services – Salaries				
100 Personnel Services – Salaries	341,633.87	297,178.83		638,812.70
Total Personnel Services – Salaries	\$341,633.87	\$297,178.83		\$638,812.70
200 Personnel Services – Employee Benefits				
210 Group Insurance – Contracted Provider	44,906.72	60,546.46		105,453.18
220 Social Security Contributions	25,321.47	21,475.35		46,796.82
230 PSERS Retirement Contributions	118,651.91	103,630.84		222,282.75
270 Group Insurance – Self-Insurance	56,002.71	100,340.59		156,343.30
292 Health Savings Accounts		500.00		500.00
Total Personnel Services – Employee Benefits	\$244,882.81	\$286,493.24		\$531,376.05
300 Purchased Professional and Technical Services				
322 Professional Educational Services – lus	165,769.70	168,141.89	124,519.59	458,431.18
330 Other Professional Services	152,103.99			152,103.99
Total Purchased Professional and Technical Services	\$317,873.69	\$168,141.89	\$124,519.59	\$610,535.17
400 Purchased Property Services				
430 Repairs and Maintenance Services	227.00			227.00
Total Purchased Property Services	\$227.00			\$227.00
500 Other Purchased Services				
569 Tuition – Other		64,713.35	138,180.06	202,893.41
Total Other Purchased Services		\$64,713.35	\$138,180.06	\$202,893.41
600 Supplies				
610 General Supplies	4,873.04			4,873.04
640 Books and Periodicals	430.07			430.07
650 Supplies & Fees – Technology Related	5,753.61			5,753.61
Total Supplies	\$11,056.72			\$11,056.72
Total 1230 Emotional Support	\$915,674.09	\$816,527.31	\$262,699.65	\$1,994,901.05

General Fund (10)

1240 Academic Support

	<u>Elementary</u>	<u>Secondary</u>	<u>Federal</u>	<u>Total</u>
100 Personnel Services – Salaries				
100 Personnel Services – Salaries	2,426,190.15	1,228,451.74		3,654,641.89
Total Personnel Services – Salaries	\$2,426,190.15	\$1,228,451.74		\$3,654,641.89
200 Personnel Services – Employee Benefits				
210 Group Insurance – Contracted Provider	229,435.46	103,080.53		332,515.99
220 Social Security Contributions	177,908.05	90,070.80		267,978.85
230 PSERS Retirement Contributions	837,422.19	419,602.53		1,257,024.72
270 Group Insurance – Self-Insurance	419,213.20	179,570.51		598,783.71
292 Health Savings Accounts	600.00	500.00		1,100.00
Total Personnel Services – Employee Benefits	\$1,664,578.90	\$792,824.37		\$2,457,403.27
300 Purchased Professional and Technical Services				
322 Professional Educational Services – lus	56,698.50	56,698.48	54,527.62	167,924.60
330 Other Professional Services	44,723.55	31,079.70		75,803.25
Total Purchased Professional and Technical Services	\$101,422.05	\$87,778.18	\$54,527.62	\$243,727.85
400 Purchased Property Services				
430 Repairs and Maintenance Services	413.00			413.00
Total Purchased Property Services	\$413.00			\$413.00
500 Other Purchased Services				
530 Communications		19.55		19.55
Total Other Purchased Services		\$19.55		\$19.55
600 Supplies				
610 General Supplies	7,976.20	44,880.28		52,856.48
640 Books and Periodicals		1,618.26		1,618.26
650 Supplies & Fees – Technology Related	5,280.26	17,214.17		22,494.43
Total Supplies	\$13,256.46	\$63,712.71		\$76,969.17
800 Other Objects				
890 Miscellaneous Expenditures	59.00			59.00
Total Other Objects	\$59.00			\$59.00
Total 1240 Academic Support	\$4,205,919.56	\$2,172,786.55	\$54,527.62	\$6,433,233.73

General Fund (10)

	<u>Elementary</u>	<u>Secondary</u>	<u>Federal</u>	<u>Total</u>
1241 Learning Support – Public				
100 Personnel Services – Salaries				
100 Personnel Services – Salaries	2,130,024.66	1,228,139.46		3,358,164.12
Total Personnel Services – Salaries	\$2,130,024.66	\$1,228,139.46		\$3,358,164.12
200 Personnel Services – Employee Benefits				
210 Group Insurance – Contracted Provider	197,812.54	103,080.53		300,893.07
220 Social Security Contributions	156,379.13	90,047.09		246,426.22
230 PSERS Retirement Contributions	734,067.91	419,601.66		1,153,669.57
270 Group Insurance – Self-Insurance	373,813.38	179,570.51		553,383.89
292 Health Savings Accounts	750.00	500.00		1,250.00
Total Personnel Services – Employee Benefits	\$1,462,822.96	\$792,799.79		\$2,255,622.75
300 Purchased Professional and Technical Services				
322 Professional Educational Services – lus	56,698.50	56,698.48	54,527.62	167,924.60
330 Other Professional Services	44,723.55	31,079.70		75,803.25
Total Purchased Professional and Technical Services	\$101,422.05	\$87,778.18	\$54,527.62	\$243,727.85
400 Purchased Property Services				
430 Repairs and Maintenance Services	413.00			413.00
Total Purchased Property Services	\$413.00			\$413.00
500 Other Purchased Services				
530 Communications		19.55		19.55
Total Other Purchased Services		\$19.55		\$19.55
600 Supplies				
610 General Supplies	4,652.80	44,880.28		49,533.08
640 Books and Periodicals		1,618.26		1,618.26
650 Supplies & Fees – Technology Related	5,280.26	17,214.17		22,494.43
Total Supplies	\$9,933.06	\$63,712.71		\$73,645.77
Total 1241 Learning Support – Public	\$3,704,615.73	\$2,172,449.69	\$54,527.62	\$5,931,593.04

General Fund (10)

1243 Gifted Support

	<u>Elementary</u>	<u>Secondary</u>	<u>Federal</u>	<u>Total</u>
100 Personnel Services – Salaries				
100 Personnel Services – Salaries	296,165.49	312.28		296,477.77
Total Personnel Services – Salaries	\$296,165.49	\$312.28		\$296,477.77
200 Personnel Services – Employee Benefits				
210 Group Insurance – Contracted Provider	31,622.92			31,622.92
220 Social Security Contributions	21,528.92	23.71		21,552.63
230 PSERS Retirement Contributions	103,354.28	0.87		103,355.15
270 Group Insurance – Self-Insurance	45,399.82			45,399.82
292 Health Savings Accounts	(150.00)			(150.00)
Total Personnel Services – Employee Benefits	\$201,755.94	\$24.58		\$201,780.52
600 Supplies				
610 General Supplies	3,323.40			3,323.40
Total Supplies	\$3,323.40			\$3,323.40
800 Other Objects				
890 Miscellaneous Expenditures	59.00			59.00
Total Other Objects	\$59.00			\$59.00
Total 1243 Gifted Support	\$501,303.83	\$336.86		\$501,640.69

General Fund (10)

	<u>Elementary</u>	<u>Secondary</u>	<u>Federal</u>	<u>Total</u>
1270 Multi-Handicapped Support				
300 <u>Purchased Professional and Technical Services</u>				
322 Professional Educational Services – Ius	45,921.14	45,921.14	19,676.58	111,518.86
Total Purchased Professional and Technical Services	\$45,921.14	\$45,921.14	\$19,676.58	\$111,518.86
400 <u>Purchased Property Services</u>				
430 Repairs and Maintenance Services	54.50	54.50		109.00
Total Purchased Property Services	\$54.50	\$54.50		\$109.00
600 <u>Supplies</u>				
610 General Supplies	3,014.61	3,014.60		6,029.21
650 Supplies & Fees – Technology Related	17.50	17.49		34.99
Total Supplies	\$3,032.11	\$3,032.09		\$6,064.20
Total 1270 Multi-Handicapped Support	\$49,007.75	\$49,007.73	\$19,676.58	\$117,692.06

General Fund (10)

1280 Early Intervention Support

300 Purchased Professional and Technical Services

	<u>Elementary</u>	<u>Secondary</u>	<u>Federal</u>	<u>Total</u>
322 Professional Educational Services – lus	10,271.88			10,271.88
330 Other Professional Services	1,599.00			1,599.00
Total Purchased Professional and Technical Services	\$11,870.88			\$11,870.88
Total 1280 Early Intervention Support	\$11,870.88			\$11,870.88

General Fund (10)

	<u>Elementary</u>	<u>Secondary</u>	<u>Federal</u>	<u>Total</u>
1290 Special Programs - Other Support				
100 Personnel Services – Salaries				
100 Personnel Services – Salaries	2,085.41	2,149.25		4,234.66
Total Personnel Services – Salaries	\$2,085.41	\$2,149.25		\$4,234.66
200 Personnel Services – Employee Benefits				
220 Social Security Contributions	158.87	163.78		322.65
230 PSERS Retirement Contributions	730.61	752.90		1,483.51
Total Personnel Services – Employee Benefits	\$889.48	\$916.68		\$1,806.16
300 Purchased Professional and Technical Services				
322 Professional Educational Services – Ius	74,635.05	191,093.31	205,578.23	471,306.59
329 Professional Educational Services – Other	32,985.77	11,396.61		44,382.38
330 Other Professional Services	110,315.28	32,109.14	61,754.94	204,179.36
Total Purchased Professional and Technical Services	\$217,936.10	\$234,599.06	\$267,333.17	\$719,868.33
400 Purchased Property Services				
430 Repairs and Maintenance Services	49.00	49.00		98.00
Total Purchased Property Services	\$49.00	\$49.00		\$98.00
500 Other Purchased Services				
510 Student Transportation Services	690.00	690.00		1,380.00
561 Tuition To Other School Districts Within the State	3,530.40	68,342.00		71,872.40
563 Tuition To Nonpublic Schools	433,565.68			433,565.68
567 Tuition To Approved Private Schools (APS) and PA Chartered Schools for the Deaf and Blind	283,640.66			283,640.66
568 Tuition To Private Residential Rehabilitative Institutions (PRRI) [In-State] and Detention Centers	7,681.60		50,270.00	57,951.60
569 Tuition – Other	(34,250.00)		43,050.00	8,800.00
Total Other Purchased Services	\$694,858.34	\$69,032.00	\$93,320.00	\$857,210.34
600 Supplies				
610 General Supplies	395.10			395.10
650 Supplies & Fees – Technology Related	824.00	824.00		1,648.00
Total Supplies	\$1,219.10	\$824.00		\$2,043.10
800 Other Objects				
810 Dues and Fees		180.00		180.00
Total Other Objects		\$180.00		\$180.00
Total 1290 Special Programs - Other Support	\$917,037.43	\$307,749.99	\$360,653.17	\$1,585,440.59

General Fund (10)

1300 Vocational Education

Elementary

Secondary

Federal

Total

500 Other Purchased Services

564 Tuition To Career and Technology Centers

728,388.00

728,388.00

Total Other Purchased Services

\$728,388.00

\$728,388.00

Total 1300 Vocational Education

\$728,388.00

\$728,388.00

General Fund (10)

1400 Other Instructional Programs – Elementary / Secondary	<u>Elementary</u>	<u>Secondary</u>	<u>Federal</u>	<u>Total</u>
100 Personnel Services – Salaries				
100 Personnel Services – Salaries	558,942.29	527,884.76	35,008.95	1,121,836.00
Total Personnel Services – Salaries	\$558,942.29	\$527,884.76	\$35,008.95	\$1,121,836.00
200 Personnel Services – Employee Benefits				
210 Group Insurance – Contracted Provider	27,531.40	29,470.48		57,001.88
220 Social Security Contributions	42,691.91	40,322.74	11.98	83,026.63
230 PSERS Retirement Contributions	114,791.97	94,889.94	77.04	209,758.95
250 Unemployment Compensation	85,800.39	94,897.58		180,697.97
270 Group Insurance – Self-Insurance	62,234.65	60,615.45		122,850.10
Total Personnel Services – Employee Benefits	\$333,050.32	\$320,196.19	\$89.02	\$653,335.53
500 Other Purchased Services				
510 Student Transportation Services	1,819.02	1,676.02	7,894.52	11,389.56
561 Tuition To Other School Districts Within the State	5,747.65	1,127.00		6,874.65
566 Tuition To Institutions of Higher Education and Technical Institutes		48,125.00		48,125.00
569 Tuition – Other			18,000.00	18,000.00
Total Other Purchased Services	\$7,566.67	\$50,928.02	\$25,894.52	\$84,389.21
600 Supplies				
610 General Supplies	3,924.47			3,924.47
640 Books and Periodicals	5,420.89	233.52		5,654.41
Total Supplies	\$9,345.36	\$233.52		\$9,578.88
800 Other Objects				
890 Miscellaneous Expenditures	624.68		1,364.00	1,988.68
Total Other Objects	\$624.68		\$1,364.00	\$1,988.68
Total 1400 Other Instructional Programs – Elementary / Secondary	\$909,529.32	\$899,242.49	\$62,356.49	\$1,871,128.30

General Fund (10)

1420 Summer School

	<u>Elementary</u>	<u>Secondary</u>	<u>Federal</u>	<u>Total</u>
100 Personnel Services – Salaries				
100 Personnel Services – Salaries	160,719.12	88,869.63	35,008.95	284,597.70
Total Personnel Services – Salaries	\$160,719.12	\$88,869.63	\$35,008.95	\$284,597.70
200 Personnel Services – Employee Benefits				
210 Group Insurance – Contracted Provider	16.95	16.95		33.90
220 Social Security Contributions	13,450.55	8,057.03	11.98	21,519.56
230 PSERS Retirement Contributions	62,834.50	37,551.65	77.04	100,463.19
270 Group Insurance – Self-Insurance	1.41	1.40		2.81
Total Personnel Services – Employee Benefits	\$76,303.41	\$45,627.03	\$89.02	\$122,019.46
500 Other Purchased Services				
510 Student Transportation Services	1,819.02	1,676.02	7,894.52	11,389.56
569 Tuition – Other			18,000.00	18,000.00
Total Other Purchased Services	\$1,819.02	\$1,676.02	\$25,894.52	\$29,389.56
600 Supplies				
610 General Supplies	3,924.47			3,924.47
640 Books and Periodicals	5,420.89	233.52		5,654.41
Total Supplies	\$9,345.36	\$233.52		\$9,578.88
800 Other Objects				
890 Miscellaneous Expenditures			1,364.00	1,364.00
Total Other Objects			\$1,364.00	\$1,364.00
Total 1420 Summer School	\$248,186.91	\$136,406.20	\$62,356.49	\$446,949.60

General Fund (10)

	<u>Elementary</u>	<u>Secondary</u>	<u>Federal</u>	<u>Total</u>
1430 Homebound Instruction				
100 Personnel Services – Salaries				
100 Personnel Services – Salaries	1,286.25	1,286.25		2,572.50
Total Personnel Services – Salaries	\$1,286.25	\$1,286.25		\$2,572.50
200 Personnel Services – Employee Benefits				
220 Social Security Contributions	93.51	176.97		270.48
230 PSERS Retirement Contributions	465.69	859.44		1,325.13
Total Personnel Services – Employee Benefits	\$559.20	\$1,036.41		\$1,595.61
500 Other Purchased Services				
561 Tuition To Other School Districts Within the State		1,127.00		1,127.00
Total Other Purchased Services		\$1,127.00		\$1,127.00
Total 1430 Homebound Instruction	\$1,845.45	\$3,449.66		\$5,295.11

General Fund (10)

	<u>Elementary</u>	<u>Secondary</u>	<u>Federal</u>	<u>Total</u>
1440 Alternative Regular Education Programs				
500 Other Purchased Services				
561 Tuition To Other School Districts Within the State	5,747.65			5,747.65
Total Other Purchased Services	\$5,747.65			\$5,747.65
800 Other Objects				
890 Miscellaneous Expenditures	624.68			624.68
Total Other Objects	\$624.68			\$624.68
Total 1440 Alternative Regular Education Programs	\$6,372.33			\$6,372.33

General Fund (10)

1441 Adjudicated / Court-Placed Programs

500 Other Purchased Services

561 Tuition To Other School Districts Within the State

Elementary

Secondary

Federal

Total

5,747.65

5,747.65

Total Other Purchased Services

\$5,747.65

\$5,747.65

800 Other Objects

890 Miscellaneous Expenditures

624.68

624.68

Total Other Objects

\$624.68

\$624.68

Total 1441 Adjudicated / Court-Placed Programs

\$6,372.33

\$6,372.33

General Fund (10)

	<u>Elementary</u>	<u>Secondary</u>	<u>Federal</u>	<u>Total</u>
1490 Additional Other Instructional Programs				
100 Personnel Services – Salaries				
100 Personnel Services – Salaries	396,936.92	437,728.88		834,665.80
Total Personnel Services – Salaries	\$396,936.92	\$437,728.88		\$834,665.80
200 Personnel Services – Employee Benefits				
210 Group Insurance – Contracted Provider	27,514.45	29,453.53		56,967.98
220 Social Security Contributions	29,147.85	32,088.74		61,236.59
230 PSERS Retirement Contributions	51,491.78	56,478.85		107,970.63
250 Unemployment Compensation	85,800.39	94,897.58		180,697.97
270 Group Insurance – Self-Insurance	62,233.24	60,614.05		122,847.29
Total Personnel Services – Employee Benefits	\$256,187.71	\$273,532.75		\$529,720.46
500 Other Purchased Services				
566 Tuition To Institutions of Higher Education and Technical Institutes		48,125.00		48,125.00
Total Other Purchased Services		\$48,125.00		\$48,125.00
Total 1490 Additional Other Instructional Programs	\$653,124.63	\$759,386.63		\$1,412,511.26

General Fund (10)

1600 Adult Education Programs

Elementary

Secondary

Federal

Total

100 Personnel Services – Salaries

100 Personnel Services – Salaries

3,086.08

3,086.08

Total Personnel Services – Salaries

\$3,086.08

\$3,086.08

200 Personnel Services – Employee Benefits

220 Social Security Contributions

19.96

217.86

230 PSERS Retirement Contributions

94.34

1,024.87

Total Personnel Services – Employee Benefits

\$114.30

\$1,242.73

600 Supplies

610 General Supplies

331.58

331.58

650 Supplies & Fees – Technology Related

233.85

Total Supplies

\$331.58

\$565.43

Total 1600 Adult Education Programs

\$3,531.96

\$4,894.24

General Fund (10)

2000 Support Services

Total

100 Personnel Services – Salaries

100 Personnel Services – Salaries 11,897,790.08

Total Personnel Services – Salaries \$11,897,790.08

200 Personnel Services – Employee Benefits

210 Group Insurance – Contracted Provider 1,073,061.84

220 Social Security Contributions 873,894.99

230 PSERS Retirement Contributions 4,116,177.56

240 Tuition Reimbursement 228,867.85

250 Unemployment Compensation 2,163.38

260 Workers' Compensation 69,260.59

270 Group Insurance – Self-Insurance 1,206,346.14

291 Other Retirement Plans 196,449.77

292 Health Savings Accounts 39,102.93

299 All Other Employee Benefits 14,721.27

Total Personnel Services – Employee Benefits \$7,820,046.32

300 Purchased Professional and Technical Services

329 Professional Educational Services – Other 34,608.52

330 Other Professional Services 1,925,144.11

340 Technical Services 15,995.02

350 Security / Safety Services 195,110.25

360 Employee Training and Development Services 175,421.97

Total Purchased Professional and Technical Services \$2,346,279.87

400 Purchased Property Services

410 Cleaning Services 64,522.04

420 Utility Services 154,192.19

430 Repairs and Maintenance Services 397,438.89

440 Rentals 37,087.19

460 Extermination Services 9,764.14

490 Other Purchased Property Services 21,486.59

Total Purchased Property Services \$684,491.04

500 Other Purchased Services

510 Student Transportation Services 184.00

513 Contracted Carriers 4,109,823.32

516 Student Transportation Services From the IU 10,311.20

529 Other Insurance 235,443.72

530 Communications 114,536.82

549 Other Advertising/Public Relations 7,283.50

550 Printing and Binding 6,991.31

580 Travel 8,006.50

595 IU Payments By Withholding 36,466.25

Total Other Purchased Services \$4,529,046.62

600 Supplies

610 General Supplies 523,503.66

620 Energy 598,615.30

General Fund (10)

2000 Support Services

Total

600 Supplies

630 Food	28,012.67
640 Books and Periodicals	48,361.44
650 Supplies & Fees – Technology Related	632,569.74

Total Supplies	\$1,831,062.81
-----------------------	-----------------------

700 Property

752 Capital Equipment – Original and Additional	23,001.50
756 Capitalized Technology Equipment – Original	252,106.31
762 Capitalized Equipment - Replacement	53,724.00
766 Capitalized Technology Equipment – Replacement	36,471.54

Total Property	\$365,303.35
-----------------------	---------------------

800 Other Objects

810 Dues and Fees	216,422.71
890 Miscellaneous Expenditures	2,157.32
899 Pass-Through Funds	414,010.16

Total Other Objects	\$632,590.19
----------------------------	---------------------

Total 2000 Support Services	\$30,106,610.28
------------------------------------	------------------------

General Fund (10)

	<u>Elementary</u>	<u>Secondary</u>	<u>Federal</u>	<u>Total</u>
2100 Support Services – Students				
100 Personnel Services – Salaries				
100 Personnel Services – Salaries	1,345,285.86	1,091,815.21		2,571,979.60
Total Personnel Services – Salaries	\$1,345,285.86	\$1,091,815.21		\$2,571,979.60
200 Personnel Services – Employee Benefits				
210 Group Insurance – Contracted Provider	119,332.44	78,202.69		206,391.52
220 Social Security Contributions	98,299.28	80,358.02		188,663.72
230 PSERS Retirement Contributions	462,730.34	378,765.28		887,394.11
270 Group Insurance – Self-Insurance	144,925.27	110,014.25		255,276.64
291 Other Retirement Plans	13,655.85			13,655.85
292 Health Savings Accounts	3,162.50	87.50		3,500.00
Total Personnel Services – Employee Benefits	\$842,105.68	\$647,427.74		\$1,555,081.84
300 Purchased Professional and Technical Services				
330 Other Professional Services	305,068.77	352,242.23	203,787.76	880,200.32
Total Purchased Professional and Technical Services	\$305,068.77	\$352,242.23	\$203,787.76	\$880,200.32
500 Other Purchased Services				
510 Student Transportation Services		184.00		184.00
550 Printing and Binding	166.23	387.85		554.08
580 Travel	75.23	75.23		507.02
Total Other Purchased Services	\$241.46	\$647.08		\$1,245.10
600 Supplies				
610 General Supplies	8,226.60	4,941.09		13,167.69
630 Food	(152.97)	(152.96)		(305.93)
640 Books and Periodicals	126.74	617.50		744.24
650 Supplies & Fees – Technology Related	14,648.52	129.00		14,777.52
Total Supplies	\$22,848.89	\$5,534.63		\$28,383.52
800 Other Objects				
810 Dues and Fees	805.50	503.88		1,469.58
890 Miscellaneous Expenditures		1,040.00		1,040.00
Total Other Objects	\$805.50	\$1,543.88		\$2,509.58
Total 2100 Support Services – Students	\$2,516,356.16	\$2,099,210.77	\$203,787.76	\$5,039,399.96

General Fund (10)

	<u>Elementary</u>	<u>Secondary</u>	<u>Federal</u>	<u>Total</u>
2110 Supervision of Student Services				
100 Personnel Services – Salaries				
100 Personnel Services – Salaries	429,356.18	506.22		429,862.40
Total Personnel Services – Salaries	\$429,356.18	\$506.22		\$429,862.40
200 Personnel Services – Employee Benefits				
210 Group Insurance – Contracted Provider	32,385.41			32,385.41
220 Social Security Contributions	31,824.35	37.13		31,861.48
230 PSERS Retirement Contributions	146,778.90			146,778.90
270 Group Insurance – Self-Insurance	42,128.06			42,128.06
291 Other Retirement Plans	1,155.85			1,155.85
292 Health Savings Accounts	3,000.00			3,000.00
Total Personnel Services – Employee Benefits	\$257,272.57	\$37.13		\$257,309.70
300 Purchased Professional and Technical Services				
330 Other Professional Services	66,727.06		240.00	66,967.06
Total Purchased Professional and Technical Services	\$66,727.06		\$240.00	\$66,967.06
600 Supplies				
610 General Supplies	3,835.28			3,835.28
650 Supplies & Fees – Technology Related	12,448.52			12,448.52
Total Supplies	\$16,283.80			\$16,283.80
800 Other Objects				
810 Dues and Fees	698.00			698.00
Total Other Objects	\$698.00			\$698.00
Total 2110 Supervision of Student Services	\$770,337.61	\$543.35	\$240.00	\$771,120.96

General Fund (10)

2111 Supervision of Student Services – Head of Component

	<u>Elementary</u>	<u>Secondary</u>	<u>Federal</u>	<u>Total</u>
100 Personnel Services – Salaries				
100 Personnel Services – Salaries	428,849.95			428,849.95
Total Personnel Services – Salaries	\$428,849.95			\$428,849.95
200 Personnel Services – Employee Benefits				
210 Group Insurance – Contracted Provider	32,385.41			32,385.41
220 Social Security Contributions	31,787.21			31,787.21
230 PSERS Retirement Contributions	146,778.90			146,778.90
270 Group Insurance – Self-Insurance	42,128.06			42,128.06
291 Other Retirement Plans	1,155.85			1,155.85
292 Health Savings Accounts	3,000.00			3,000.00
Total Personnel Services – Employee Benefits	\$257,235.43			\$257,235.43
300 Purchased Professional and Technical Services				
330 Other Professional Services	66,727.06		240.00	66,967.06
Total Purchased Professional and Technical Services	\$66,727.06		\$240.00	\$66,967.06
600 Supplies				
610 General Supplies	3,835.28			3,835.28
650 Supplies & Fees – Technology Related	12,448.52			12,448.52
Total Supplies	\$16,283.80			\$16,283.80
800 Other Objects				
810 Dues and Fees	698.00			698.00
Total Other Objects	\$698.00			\$698.00
Total 2111 Supervision of Student Services – Head of Component	\$769,794.24		\$240.00	\$770,034.24

General Fund (10)

	<u>Elementary</u>	<u>Secondary</u>	<u>Federal</u>	<u>Total</u>
2119 Supervision of Student Services – All Other Supervision				
100 Personnel Services – Salaries				
100 Personnel Services – Salaries	506.23	506.22		1,012.45
Total Personnel Services – Salaries	\$506.23	\$506.22		\$1,012.45
200 Personnel Services – Employee Benefits				
220 Social Security Contributions	37.14	37.13		74.27
Total Personnel Services – Employee Benefits	\$37.14	\$37.13		\$74.27
Total 2119 Supervision of Student Services – All Other Supervision	\$543.37	\$543.35		\$1,086.72

General Fund (10)

	<u>Elementary</u>	<u>Secondary</u>	<u>Federal</u>	<u>Total</u>
2120 Guidance Services				
100 Personnel Services – Salaries				
100 Personnel Services – Salaries	446,914.54	642,395.21		1,089,309.75
Total Personnel Services – Salaries	\$446,914.54	\$642,395.21		\$1,089,309.75
200 Personnel Services – Employee Benefits				
210 Group Insurance – Contracted Provider	34,520.41	50,953.01		85,473.42
220 Social Security Contributions	33,021.48	46,891.56		79,913.04
230 PSERS Retirement Contributions	154,670.16	221,245.47		375,915.63
270 Group Insurance – Self-Insurance	52,455.84	82,295.01		134,750.85
Total Personnel Services – Employee Benefits	\$274,667.89	\$401,385.05		\$676,052.94
300 Purchased Professional and Technical Services				
330 Other Professional Services	3,934.95	4,434.95		8,369.90
Total Purchased Professional and Technical Services	\$3,934.95	\$4,434.95		\$8,369.90
500 Other Purchased Services				
510 Student Transportation Services		184.00		184.00
550 Printing and Binding	166.23	387.85		554.08
Total Other Purchased Services	\$166.23	\$571.85		\$738.08
600 Supplies				
610 General Supplies	881.83	1,453.03		2,334.86
640 Books and Periodicals	56.79	617.50		674.29
650 Supplies & Fees – Technology Related	1,860.00			1,860.00
Total Supplies	\$2,798.62	\$2,070.53		\$4,869.15
800 Other Objects				
810 Dues and Fees		396.38		396.38
890 Miscellaneous Expenditures		1,040.00		1,040.00
Total Other Objects		\$1,436.38		\$1,436.38
Total 2120 Guidance Services	\$728,482.23	\$1,052,293.97		\$1,780,776.20

General Fund (10)

2130 Attendance Services

<u>Elementary</u>	<u>Secondary</u>	<u>Federal</u>	<u>Total</u>
-------------------	------------------	----------------	--------------

100 Personnel Services – Salaries

100	Personnel Services – Salaries		134,878.53
-----	-------------------------------	--	------------

Total Personnel Services – Salaries			\$134,878.53
--	--	--	---------------------

200 Personnel Services – Employee Benefits

210	Group Insurance – Contracted Provider		8,856.39
-----	---------------------------------------	--	----------

220	Social Security Contributions		10,206.42
-----	-------------------------------	--	-----------

230	PSERS Retirement Contributions		45,898.49
-----	--------------------------------	--	-----------

270	Group Insurance – Self-Insurance		337.12
-----	----------------------------------	--	--------

292	Health Savings Accounts		250.00
-----	-------------------------	--	--------

Total Personnel Services – Employee Benefits			\$65,548.42
---	--	--	--------------------

500 Other Purchased Services

580	Travel		356.56
-----	--------	--	--------

Total Other Purchased Services			\$356.56
---------------------------------------	--	--	-----------------

Total 2130 Attendance Services			\$200,783.51
---------------------------------------	--	--	---------------------

General Fund (10)

2140 Psychological Services

	<u>Elementary</u>	<u>Secondary</u>	<u>Federal</u>	<u>Total</u>
100 Personnel Services – Salaries				
100 Personnel Services – Salaries	227,524.99	149,656.53		377,181.52
Total Personnel Services – Salaries	\$227,524.99	\$149,656.53		\$377,181.52
200 Personnel Services – Employee Benefits				
210 Group Insurance – Contracted Provider	14,599.41	355.49		14,954.90
220 Social Security Contributions	16,228.84	11,271.22		27,500.06
230 PSERS Retirement Contributions	79,664.21	52,229.69		131,893.90
270 Group Insurance – Self-Insurance	41,658.98	5,441.28		47,100.26
292 Health Savings Accounts	162.50	87.50		250.00
Total Personnel Services – Employee Benefits	\$152,313.94	\$69,385.18		\$221,699.12
300 Purchased Professional and Technical Services				
330 Other Professional Services	77,632.35	86,523.76	193,412.56	357,568.67
Total Purchased Professional and Technical Services	\$77,632.35	\$86,523.76	\$193,412.56	\$357,568.67
500 Other Purchased Services				
580 Travel	75.23	75.23		150.46
Total Other Purchased Services	\$75.23	\$75.23		\$150.46
600 Supplies				
610 General Supplies	1,104.00	2,440.52		3,544.52
650 Supplies & Fees – Technology Related	340.00			340.00
Total Supplies	\$1,444.00	\$2,440.52		\$3,884.52
Total 2140 Psychological Services	\$458,990.51	\$308,081.22	\$193,412.56	\$960,484.29

General Fund (10)

	<u>Elementary</u>	<u>Secondary</u>	<u>Federal</u>	<u>Total</u>
2150 Speech Pathology and Audiology Services				
100 Personnel Services – Salaries				
100 Personnel Services – Salaries	176,409.97	82,395.63		258,805.60
Total Personnel Services – Salaries	\$176,409.97	\$82,395.63		\$258,805.60
200 Personnel Services – Employee Benefits				
210 Group Insurance – Contracted Provider	30,459.84	5,695.15		36,154.99
220 Social Security Contributions	12,334.65	6,004.46		18,339.11
230 PSERS Retirement Contributions	62,408.73	28,370.70		90,779.43
270 Group Insurance – Self-Insurance	8,427.06	11,012.64		19,439.70
Total Personnel Services – Employee Benefits	\$113,630.28	\$51,082.95		\$164,713.23
300 Purchased Professional and Technical Services				
330 Other Professional Services	99,520.09	204,029.21	7,891.57	311,440.87
Total Purchased Professional and Technical Services	\$99,520.09	\$204,029.21	\$7,891.57	\$311,440.87
600 Supplies				
610 General Supplies	2,405.49	1,047.54		3,453.03
650 Supplies & Fees – Technology Related		129.00		129.00
Total Supplies	\$2,405.49	\$1,176.54		\$3,582.03
Total 2150 Speech Pathology and Audiology Services	\$391,965.83	\$338,684.33	\$7,891.57	\$738,541.73

General Fund (10)

2160 Social Work Services

Elementary

Secondary

Federal

Total

300 Purchased Professional and Technical Services

330 Other Professional Services

2,243.63

21,345.19

Total Purchased Professional and Technical Services

\$2,243.63

\$21,345.19

Total 2160 Social Work Services

\$2,243.63

\$21,345.19

General Fund (10)

2170 Student Accounting Services

Elementary

Secondary

Federal

Total

800 Other Objects

810 Dues and Fees

160.20

Total Other Objects

\$160.20

Total 2170 Student Accounting Services

\$160.20

General Fund (10)

	<u>Elementary</u>	<u>Secondary</u>	<u>Federal</u>	<u>Total</u>
2190 Other Student Services				
100 Personnel Services – Salaries				
100 Personnel Services – Salaries	65,080.18	216,861.62		281,941.80
Total Personnel Services – Salaries	\$65,080.18	\$216,861.62		\$281,941.80
200 Personnel Services – Employee Benefits				
210 Group Insurance – Contracted Provider	7,367.37	21,199.04		28,566.41
220 Social Security Contributions	4,889.96	16,153.65		21,043.61
230 PSERS Retirement Contributions	19,208.34	76,919.42		96,127.76
270 Group Insurance – Self-Insurance	255.33	11,265.32		11,520.65
291 Other Retirement Plans	12,500.00			12,500.00
Total Personnel Services – Employee Benefits	\$44,221.00	\$125,537.43		\$169,758.43
300 Purchased Professional and Technical Services				
330 Other Professional Services	57,254.32	57,254.31		114,508.63
Total Purchased Professional and Technical Services	\$57,254.32	\$57,254.31		\$114,508.63
600 Supplies				
630 Food	(152.97)	(152.96)		(305.93)
640 Books and Periodicals	69.95			69.95
Total Supplies	(\$83.02)	(\$152.96)		(\$235.98)
800 Other Objects				
810 Dues and Fees	107.50	107.50		215.00
Total Other Objects	\$107.50	\$107.50		\$215.00
Total 2190 Other Student Services	\$166,579.98	\$399,607.90		\$566,187.88

General Fund (10)

2200 Support Services – Instructional Staff

	<u>Elementary</u>	<u>Secondary</u>	<u>Federal</u>	<u>Total</u>
100 Personnel Services – Salaries				
100 Personnel Services – Salaries	623,510.92	574,654.68	277,345.91	1,475,511.51
Total Personnel Services – Salaries	\$623,510.92	\$574,654.68	\$277,345.91	\$1,475,511.51
200 Personnel Services – Employee Benefits				
210 Group Insurance – Contracted Provider	30,636.55	34,773.80	16,039.26	81,449.61
220 Social Security Contributions	52,446.85	48,472.02	7,143.64	108,062.51
230 PSERS Retirement Contributions	242,260.14	225,232.59	35,824.12	503,316.85
240 Tuition Reimbursement	93,370.00	92,934.00		186,304.00
270 Group Insurance – Self-Insurance	42,794.09	50,583.41	15,820.74	109,198.24
291 Other Retirement Plans	7,350.77	7,350.77		14,701.54
292 Health Savings Accounts	500.00	500.00	250.00	1,250.00
Total Personnel Services – Employee Benefits	\$469,358.40	\$459,846.59	\$75,077.76	\$1,004,282.75
300 Purchased Professional and Technical Services				
330 Other Professional Services		2,005.00	36,830.00	38,835.00
360 Employee Training and Development Services	7,184.22	8,938.10	23,622.00	39,744.32
Total Purchased Professional and Technical Services	\$7,184.22	\$10,943.10	\$60,452.00	\$78,579.32
400 Purchased Property Services				
440 Rentals	2,312.89	2,312.88		4,625.77
490 Other Purchased Property Services	1,273.00			1,273.00
Total Purchased Property Services	\$3,585.89	\$2,312.88		\$5,898.77
500 Other Purchased Services				
580 Travel	646.61			646.61
Total Other Purchased Services	\$646.61			\$646.61
600 Supplies				
610 General Supplies	2,664.38	3,789.70	343.70	6,797.78
630 Food	798.75	798.73		1,597.48
640 Books and Periodicals	29,921.48	10,688.01	2,377.58	42,987.07
650 Supplies & Fees – Technology Related	10,587.80	75,373.52	68,255.00	154,216.32
Total Supplies	\$43,972.41	\$90,649.96	\$70,976.28	\$205,598.65
800 Other Objects				
810 Dues and Fees	916.00	916.00		1,832.00
890 Miscellaneous Expenditures	289.32			289.32
Total Other Objects	\$1,205.32	\$916.00		\$2,121.32
Total 2200 Support Services – Instructional Staff	\$1,149,463.77	\$1,139,323.21	\$483,851.95	\$2,772,638.93

General Fund (10)

2210 Supervision of Educational Media Services

800 Other Objects

890 Miscellaneous Expenditures

Total Other Objects

Total 2210 Supervision of Educational Media Services

Elementary

Secondary

Federal

Total

185.82

185.82

\$185.82

\$185.82

\$185.82

\$185.82

General Fund (10)

2211 Supervision of Educational Media Services – Head of Component

800 Other Objects

890 Miscellaneous Expenditures

Total Other Objects

Total 2211 Supervision of Educational Media Services – Head of Component

Elementary

Secondary

Federal

Total

185.82

185.82

\$185.82

\$185.82

\$185.82

\$185.82

General Fund (10)

2230 Educational Television Services

	<u>Elementary</u>	<u>Secondary</u>	<u>Federal</u>	<u>Total</u>
100 Personnel Services – Salaries				
100 Personnel Services – Salaries	57,777.02	57,777.02		115,554.04
Total Personnel Services – Salaries	\$57,777.02	\$57,777.02		\$115,554.04
200 Personnel Services – Employee Benefits				
210 Group Insurance – Contracted Provider	9,846.28	9,846.28		19,692.56
220 Social Security Contributions	4,395.01	4,395.01		8,790.02
230 PSERS Retirement Contributions	20,187.32	20,187.31		40,374.63
270 Group Insurance – Self-Insurance	306.08	306.07		612.15
Total Personnel Services – Employee Benefits	\$34,734.69	\$34,734.67		\$69,469.36
300 Purchased Professional and Technical Services				
330 Other Professional Services		2,005.00		2,005.00
Total Purchased Professional and Technical Services		\$2,005.00		\$2,005.00
600 Supplies				
610 General Supplies		732.21		732.21
650 Supplies & Fees – Technology Related		45,158.80		45,158.80
Total Supplies		\$45,891.01		\$45,891.01
Total 2230 Educational Television Services	\$92,511.71	\$140,407.70		\$232,919.41

General Fund (10)

	<u>Elementary</u>	<u>Secondary</u>	<u>Federal</u>	<u>Total</u>
2250 School Library Services				
100 Personnel Services – Salaries				
100 Personnel Services – Salaries	219,223.52	170,959.56		390,183.08
Total Personnel Services – Salaries	\$219,223.52	\$170,959.56		\$390,183.08
200 Personnel Services – Employee Benefits				
210 Group Insurance – Contracted Provider	3,311.72	7,448.97		10,760.69
220 Social Security Contributions	16,609.68	12,676.83		29,286.51
230 PSERS Retirement Contributions	75,199.26	58,378.71		133,577.97
270 Group Insurance – Self-Insurance	5,977.44	13,766.80		19,744.24
Total Personnel Services – Employee Benefits	\$101,098.10	\$92,271.31		\$193,369.41
600 Supplies				
610 General Supplies	638.59	1,044.93		1,683.52
640 Books and Periodicals	23,080.81	9,559.78		32,640.59
650 Supplies & Fees – Technology Related	5,718.19	15,731.92		21,450.11
Total Supplies	\$29,437.59	\$26,336.63		\$55,774.22
Total 2250 School Library Services	\$349,759.21	\$289,567.50		\$639,326.71

General Fund (10)

2260 Instruction and Curriculum Development Services

	<u>Elementary</u>	<u>Secondary</u>	<u>Federal</u>	<u>Total</u>
100 Personnel Services – Salaries				
100 Personnel Services – Salaries	322,406.63	322,314.36	277,345.91	922,066.90
Total Personnel Services – Salaries	\$322,406.63	\$322,314.36	\$277,345.91	\$922,066.90
200 Personnel Services – Employee Benefits				
210 Group Insurance – Contracted Provider	17,478.55	17,478.55	16,039.26	50,996.36
220 Social Security Contributions	29,625.10	29,618.02	7,143.64	66,386.76
230 PSERS Retirement Contributions	138,443.26	138,410.98	35,824.12	312,678.36
270 Group Insurance – Self-Insurance	36,510.57	36,510.54	15,820.74	88,841.85
291 Other Retirement Plans	7,350.77	7,350.77		14,701.54
292 Health Savings Accounts	500.00	500.00	250.00	1,250.00
Total Personnel Services – Employee Benefits	\$229,908.25	\$229,868.86	\$75,077.76	\$534,854.87
300 Purchased Professional and Technical Services				
330 Other Professional Services			36,830.00	36,830.00
Total Purchased Professional and Technical Services			\$36,830.00	\$36,830.00
400 Purchased Property Services				
490 Other Purchased Property Services	1,273.00			1,273.00
Total Purchased Property Services	\$1,273.00			\$1,273.00
600 Supplies				
610 General Supplies	1,966.98	1,966.96		3,933.94
630 Food	690.88	690.87		1,381.75
640 Books and Periodicals	3,556.14	103.57	1,601.50	5,261.21
650 Supplies & Fees – Technology Related	4,869.61	14,482.80	68,255.00	87,607.41
Total Supplies	\$11,083.61	\$17,244.20	\$69,856.50	\$98,184.31
800 Other Objects				
810 Dues and Fees	916.00	916.00		1,832.00
Total Other Objects	\$916.00	\$916.00		\$1,832.00
Total 2260 Instruction and Curriculum Development Services	\$565,587.49	\$570,343.42	\$459,110.17	\$1,595,041.08

General Fund (10)

2270 Instructional Staff Professional Development Services	<u>Elementary</u>	<u>Secondary</u>	<u>Federal</u>	<u>Total</u>
100 Personnel Services – Salaries				
100 Personnel Services – Salaries	24,103.75	23,603.74		47,707.49
Total Personnel Services – Salaries	\$24,103.75	\$23,603.74		\$47,707.49
200 Personnel Services – Employee Benefits				
220 Social Security Contributions	1,817.06	1,782.16		3,599.22
230 PSERS Retirement Contributions	8,430.30	8,255.59		16,685.89
240 Tuition Reimbursement	93,370.00	92,934.00		186,304.00
Total Personnel Services – Employee Benefits	\$103,617.36	\$102,971.75		\$206,589.11
300 Purchased Professional and Technical Services				
360 Employee Training and Development Services	7,184.22	8,938.10	23,622.00	39,744.32
Total Purchased Professional and Technical Services	\$7,184.22	\$8,938.10	\$23,622.00	\$39,744.32
400 Purchased Property Services				
440 Rentals	2,312.89	2,312.88		4,625.77
Total Purchased Property Services	\$2,312.89	\$2,312.88		\$4,625.77
500 Other Purchased Services				
580 Travel	646.61			646.61
Total Other Purchased Services	\$646.61			\$646.61
600 Supplies				
610 General Supplies	58.81	45.60	343.70	448.11
630 Food	107.87	107.86		215.73
640 Books and Periodicals	3,284.53	1,024.66	776.08	5,085.27
Total Supplies	\$3,451.21	\$1,178.12	\$1,119.78	\$5,749.11
800 Other Objects				
890 Miscellaneous Expenditures	103.50			103.50
Total Other Objects	\$103.50			\$103.50
Total 2270 Instructional Staff Professional Development Services	\$141,419.54	\$139,004.59	\$24,741.78	\$305,165.91

General Fund (10)

	<u>Elementary</u>	<u>Secondary</u>	<u>Federal</u>	<u>Total</u>
2300 Support Services – Administration				
100 Personnel Services – Salaries				
100 Personnel Services – Salaries	1,018,987.39	1,149,591.76	4,119.09	3,012,725.96
Total Personnel Services – Salaries	\$1,018,987.39	\$1,149,591.76	\$4,119.09	\$3,012,725.96
200 Personnel Services – Employee Benefits				
210 Group Insurance – Contracted Provider	67,365.63	86,025.75		202,885.82
220 Social Security Contributions	76,579.65	85,133.60	153.18	215,461.39
230 PSERS Retirement Contributions	346,544.42	391,154.32	721.65	1,029,083.67
270 Group Insurance – Self-Insurance	77,702.92	89,035.40		231,346.85
291 Other Retirement Plans	22,941.70	26,066.31		120,245.75
292 Health Savings Accounts	6,666.62	7,166.65		16,333.27
299 All Other Employee Benefits				10,571.27
Total Personnel Services – Employee Benefits	\$597,800.94	\$684,582.03	\$874.83	\$1,825,928.02
300 Purchased Professional and Technical Services				
329 Professional Educational Services – Other	33,682.22	926.30		34,608.52
330 Other Professional Services	21,229.77	13,733.37	2,300.00	458,414.08
350 Security / Safety Services				1,248.00
Total Purchased Professional and Technical Services	\$54,911.99	\$14,659.67	\$2,300.00	\$494,270.60
500 Other Purchased Services				
530 Communications	257.49	250.00		4,873.40
549 Other Advertising/Public Relations				6,959.50
550 Printing and Binding	350.00	3,812.23		6,437.23
580 Travel				1,227.72
Total Other Purchased Services	\$607.49	\$4,062.23		\$19,497.85
600 Supplies				
610 General Supplies	3,525.69	2,287.22	109.39	17,734.53
630 Food	59.96	2,088.05	14,579.47	25,199.12
640 Books and Periodicals			2,997.63	4,538.72
650 Supplies & Fees – Technology Related		366.19		5,572.97
Total Supplies	\$3,585.65	\$4,741.46	\$17,686.49	\$53,045.34
800 Other Objects				
810 Dues and Fees	1,068.25	1,428.00	277.20	196,854.41
890 Miscellaneous Expenditures		460.00	230.00	828.00
Total Other Objects	\$1,068.25	\$1,888.00	\$507.20	\$197,682.41
Total 2300 Support Services – Administration	\$1,676,961.71	\$1,859,525.15	\$25,487.61	\$5,603,150.18

General Fund (10)

2310 Board Services

Elementary Secondary Federal Total

100	<u>Personnel Services – Salaries</u>				
	100 Personnel Services – Salaries				2,800.00
Total Personnel Services – Salaries					\$2,800.00
200	<u>Personnel Services – Employee Benefits</u>				
	220 Social Security Contributions				210.03
	230 PSERS Retirement Contributions				978.32
Total Personnel Services – Employee Benefits					\$1,188.35
300	<u>Purchased Professional and Technical Services</u>				
	330 Other Professional Services				146.98
	350 Security / Safety Services				1,248.00
Total Purchased Professional and Technical Services					\$1,394.98
500	<u>Other Purchased Services</u>				
	530 Communications				30.89
	549 Other Advertising/Public Relations				894.50
	550 Printing and Binding				2,275.00
Total Other Purchased Services					\$3,200.39
600	<u>Supplies</u>				
	610 General Supplies				10,057.85
	630 Food				2,190.69
	640 Books and Periodicals				354.79
Total Supplies					\$12,603.33
800	<u>Other Objects</u>				
	810 Dues and Fees				15,840.42
	890 Miscellaneous Expenditures				138.00
Total Other Objects					\$15,978.42
Total 2310 Board Services					\$37,165.47

General Fund (10)

	<u>Elementary</u>	<u>Secondary</u>	<u>Federal</u>	<u>Total</u>
2330 Tax Assessment and Collection Services				
300 <u>Purchased Professional and Technical Services</u>				
330 Other Professional Services				32,127.04
Total Purchased Professional and Technical Services				\$32,127.04
500 <u>Other Purchased Services</u>				
530 Communications				4,335.02
Total Other Purchased Services				\$4,335.02
800 <u>Other Objects</u>				
810 Dues and Fees				142,213.89
Total Other Objects				\$142,213.89
Total 2330 Tax Assessment and Collection Services				\$178,675.95

General Fund (10)

2350 Legal and Accounting Services

Elementary

Secondary

Federal

Total

300 Purchased Professional and Technical Services

330 Other Professional Services

368,249.18

Total Purchased Professional and Technical Services

\$368,249.18

Total 2350 Legal and Accounting Services

\$368,249.18

General Fund (10)

	<u>Elementary</u>	<u>Secondary</u>	<u>Federal</u>	<u>Total</u>
2360 Office of the Superintendent / Executive Director Services				
100 Personnel Services – Salaries				
100 Personnel Services – Salaries				686,797.91
Total Personnel Services – Salaries				\$686,797.91
200 Personnel Services – Employee Benefits				
210 Group Insurance – Contracted Provider				29,580.70
220 Social Security Contributions				41,862.84
230 PSERS Retirement Contributions				236,752.57
270 Group Insurance – Self-Insurance				38,781.33
291 Other Retirement Plans				65,747.39
292 Health Savings Accounts				1,500.00
299 All Other Employee Benefits				10,571.27
Total Personnel Services – Employee Benefits				\$424,796.10
300 Purchased Professional and Technical Services				
330 Other Professional Services				10,508.81
Total Purchased Professional and Technical Services				\$10,508.81
500 Other Purchased Services				
530 Communications	250.00	250.00		500.00
580 Travel				1,227.72
Total Other Purchased Services	\$250.00	\$250.00		\$1,727.72
600 Supplies				
610 General Supplies				426.01
630 Food			13,452.00	19,642.04
640 Books and Periodicals				1,186.30
650 Supplies & Fees – Technology Related				3,480.00
Total Supplies			\$13,452.00	\$24,734.35
800 Other Objects				
810 Dues and Fees				27,103.09
Total Other Objects				\$27,103.09
Total 2360 Office of the Superintendent / Executive Director Services	\$250.00	\$250.00	\$13,452.00	\$1,175,667.98

General Fund (10)

	<u>Elementary</u>	<u>Secondary</u>	<u>Federal</u>	<u>Total</u>
2370 Community Relations Services				
100 Personnel Services – Salaries				
100 Personnel Services – Salaries			4,119.09	154,548.90
Total Personnel Services – Salaries			\$4,119.09	\$154,548.90
200 Personnel Services – Employee Benefits				
210 Group Insurance – Contracted Provider				19,913.74
220 Social Security Contributions			153.18	11,675.27
230 PSERS Retirement Contributions			721.65	53,654.04
270 Group Insurance – Self-Insurance				25,827.20
291 Other Retirement Plans				5,490.35
292 Health Savings Accounts				1,000.00
Total Personnel Services – Employee Benefits			\$874.83	\$117,560.60
300 Purchased Professional and Technical Services				
330 Other Professional Services			2,300.00	9,800.00
Total Purchased Professional and Technical Services			\$2,300.00	\$9,800.00
500 Other Purchased Services				
549 Other Advertising/Public Relations				6,065.00
Total Other Purchased Services				\$6,065.00
600 Supplies				
610 General Supplies			109.39	1,437.76
630 Food			1,127.47	1,218.38
640 Books and Periodicals			2,997.63	2,997.63
650 Supplies & Fees – Technology Related				1,726.78
Total Supplies			\$4,234.49	\$7,380.55
800 Other Objects				
810 Dues and Fees			277.20	1,131.76
890 Miscellaneous Expenditures			230.00	230.00
Total Other Objects			\$507.20	\$1,361.76
Total 2370 Community Relations Services			\$12,035.61	\$296,716.81

General Fund (10)

	<u>Elementary</u>	<u>Secondary</u>	<u>Federal</u>	<u>Total</u>
2380 Office of the Principal Services				
100 Personnel Services – Salaries				
100 Personnel Services – Salaries	1,018,987.39	1,149,591.76		2,168,579.15
Total Personnel Services – Salaries	\$1,018,987.39	\$1,149,591.76		\$2,168,579.15
200 Personnel Services – Employee Benefits				
210 Group Insurance – Contracted Provider	67,365.63	86,025.75		153,391.38
220 Social Security Contributions	76,579.65	85,133.60		161,713.25
230 PSERS Retirement Contributions	346,544.42	391,154.32		737,698.74
270 Group Insurance – Self-Insurance	77,702.92	89,035.40		166,738.32
291 Other Retirement Plans	22,941.70	26,066.31		49,008.01
292 Health Savings Accounts	6,666.62	7,166.65		13,833.27
Total Personnel Services – Employee Benefits	\$597,800.94	\$684,582.03		\$1,282,382.97
300 Purchased Professional and Technical Services				
329 Professional Educational Services – Other	33,682.22	926.30		34,608.52
330 Other Professional Services	21,229.77	13,733.37		34,963.14
Total Purchased Professional and Technical Services	\$54,911.99	\$14,659.67		\$69,571.66
500 Other Purchased Services				
530 Communications	7.49			7.49
550 Printing and Binding	350.00	3,812.23		4,162.23
Total Other Purchased Services	\$357.49	\$3,812.23		\$4,169.72
600 Supplies				
610 General Supplies	3,525.69	2,287.22		5,812.91
630 Food	59.96	2,088.05		2,148.01
650 Supplies & Fees – Technology Related		366.19		366.19
Total Supplies	\$3,585.65	\$4,741.46		\$8,327.11
800 Other Objects				
810 Dues and Fees	1,068.25	1,428.00		2,496.25
890 Miscellaneous Expenditures		460.00		460.00
Total Other Objects	\$1,068.25	\$1,888.00		\$2,956.25
Total 2380 Office of the Principal Services	\$1,676,711.71	\$1,859,275.15		\$3,535,986.86

General Fund (10)

	<u>Elementary</u>	<u>Secondary</u>	<u>Federal</u>	<u>Total</u>
2390 Other Administration Services				
300 <u>Purchased Professional and Technical Services</u>				
330 Other Professional Services				2,618.93
Total Purchased Professional and Technical Services				\$2,618.93
800 <u>Other Objects</u>				
810 Dues and Fees				8,069.00
Total Other Objects				\$8,069.00
Total 2390 Other Administration Services				\$10,687.93

General Fund (10)

2400 Support Services – Pupil Health

100 Personnel Services – Salaries

	<u>Elementary</u>	<u>Secondary</u>	<u>Federal</u>	<u>Total</u>
100 Personnel Services – Salaries			563.50	697,913.73
Total Personnel Services – Salaries			\$563.50	\$697,913.73

200 Personnel Services – Employee Benefits

210 Group Insurance – Contracted Provider				62,521.91
220 Social Security Contributions			21.26	51,712.02
230 PSERS Retirement Contributions			98.44	242,246.24
270 Group Insurance – Self-Insurance				46,409.00
291 Other Retirement Plans				826.32
292 Health Savings Accounts				750.00
Total Personnel Services – Employee Benefits			\$119.70	\$404,465.49

300 Purchased Professional and Technical Services

330 Other Professional Services			940.50	276,213.80
Total Purchased Professional and Technical Services			\$940.50	\$276,213.80

400 Purchased Property Services

410 Cleaning Services				425.04
Total Purchased Property Services				\$425.04

500 Other Purchased Services

580 Travel				56.41
Total Other Purchased Services				\$56.41

600 Supplies

610 General Supplies				9,135.38
Total Supplies				\$9,135.38

Total 2400 Support Services – Pupil Health

			\$1,623.70	\$1,388,209.85
--	--	--	-------------------	-----------------------

General Fund (10)

2420 Medical Services

	<u>Elementary</u>	<u>Secondary</u>	<u>Federal</u>	<u>Total</u>
100 Personnel Services – Salaries				
100 Personnel Services – Salaries				227,684.88
Total Personnel Services – Salaries				\$227,684.88
200 Personnel Services – Employee Benefits				
210 Group Insurance – Contracted Provider				29,630.29
220 Social Security Contributions				16,574.02
230 PSERS Retirement Contributions				79,959.97
270 Group Insurance – Self-Insurance				14,345.94
291 Other Retirement Plans				826.32
Total Personnel Services – Employee Benefits				\$141,336.54
300 Purchased Professional and Technical Services				
330 Other Professional Services			940.50	169,928.30
Total Purchased Professional and Technical Services			\$940.50	\$169,928.30
500 Other Purchased Services				
580 Travel				25.16
Total Other Purchased Services				\$25.16
600 Supplies				
610 General Supplies				373.77
Total Supplies				\$373.77
Total 2420 Medical Services			\$940.50	\$539,348.65

General Fund (10)

2440 Nursing Services

	<u>Elementary</u>	<u>Secondary</u>	<u>Federal</u>	<u>Total</u>
100 Personnel Services – Salaries				
100 Personnel Services – Salaries			563.50	470,228.85
Total Personnel Services – Salaries			\$563.50	\$470,228.85
200 Personnel Services – Employee Benefits				
210 Group Insurance – Contracted Provider				32,891.62
220 Social Security Contributions			21.26	35,138.00
230 PSERS Retirement Contributions			98.44	162,286.27
270 Group Insurance – Self-Insurance				32,063.06
292 Health Savings Accounts				750.00
Total Personnel Services – Employee Benefits			\$119.70	\$263,128.95
300 Purchased Professional and Technical Services				
330 Other Professional Services				106,285.50
Total Purchased Professional and Technical Services				\$106,285.50
400 Purchased Property Services				
410 Cleaning Services				425.04
Total Purchased Property Services				\$425.04
500 Other Purchased Services				
580 Travel				31.25
Total Other Purchased Services				\$31.25
600 Supplies				
610 General Supplies				8,761.61
Total Supplies				\$8,761.61
Total 2440 Nursing Services			\$683.20	\$848,861.20

General Fund (10)

	<u>Elementary</u>	<u>Secondary</u>	<u>Federal</u>	<u>Total</u>
2500 Support Services – Business				
100 Personnel Services – Salaries				
100 Personnel Services – Salaries				599,607.14
Total Personnel Services – Salaries				\$599,607.14
200 Personnel Services – Employee Benefits				
210 Group Insurance – Contracted Provider				83,279.53
220 Social Security Contributions				45,836.05
230 PSERS Retirement Contributions				222,849.21
270 Group Insurance – Self-Insurance				77,115.34
291 Other Retirement Plans				15,239.78
292 Health Savings Accounts				2,250.00
Total Personnel Services – Employee Benefits				\$446,569.91
300 Purchased Professional and Technical Services				
330 Other Professional Services				61,207.12
Total Purchased Professional and Technical Services				\$61,207.12
400 Purchased Property Services				
440 Rentals				3,743.88
Total Purchased Property Services				\$3,743.88
500 Other Purchased Services				
530 Communications				9,541.92
580 Travel				2,313.87
Total Other Purchased Services				\$11,855.79
600 Supplies				
610 General Supplies				6,806.95
650 Supplies & Fees – Technology Related				5,099.50
Total Supplies				\$11,906.45
800 Other Objects				
810 Dues and Fees				10,021.75
Total Other Objects				\$10,021.75
Total 2500 Support Services – Business				\$1,144,912.04

General Fund (10)

	<u>Elementary</u>	<u>Secondary</u>	<u>Federal</u>	<u>Total</u>
2510 Fiscal Services				
100 <u>Personnel Services – Salaries</u>				
100 Personnel Services – Salaries				599,607.14
Total Personnel Services – Salaries				\$599,607.14
200 <u>Personnel Services – Employee Benefits</u>				
210 Group Insurance – Contracted Provider				83,279.53
220 Social Security Contributions				45,836.05
230 PSERS Retirement Contributions				222,849.21
270 Group Insurance – Self-Insurance				77,115.34
291 Other Retirement Plans				15,239.78
292 Health Savings Accounts				2,250.00
Total Personnel Services – Employee Benefits				\$446,569.91
300 <u>Purchased Professional and Technical Services</u>				
330 Other Professional Services				61,207.12
Total Purchased Professional and Technical Services				\$61,207.12
400 <u>Purchased Property Services</u>				
440 Rentals				3,743.88
Total Purchased Property Services				\$3,743.88
500 <u>Other Purchased Services</u>				
530 Communications				9,541.92
580 Travel				2,313.87
Total Other Purchased Services				\$11,855.79
600 <u>Supplies</u>				
610 General Supplies				6,806.95
650 Supplies & Fees – Technology Related				5,099.50
Total Supplies				\$11,906.45
800 <u>Other Objects</u>				
810 Dues and Fees				10,021.75
Total Other Objects				\$10,021.75
Total 2510 Fiscal Services				\$1,144,912.04

General Fund (10)

	<u>Elementary</u>	<u>Secondary</u>	<u>Federal</u>	<u>Total</u>
2511 Supervision of Fiscal Services - Head of Component				
100 <u>Personnel Services – Salaries</u>				
100 Personnel Services – Salaries				529,504.23
Total Personnel Services – Salaries				\$529,504.23
200 <u>Personnel Services – Employee Benefits</u>				
210 Group Insurance – Contracted Provider				72,778.10
220 Social Security Contributions				40,617.00
230 PSERS Retirement Contributions				198,436.97
270 Group Insurance – Self-Insurance				63,365.66
291 Other Retirement Plans				14,554.82
292 Health Savings Accounts				2,250.00
Total Personnel Services – Employee Benefits				\$392,002.55
300 <u>Purchased Professional and Technical Services</u>				
330 Other Professional Services				61,207.12
Total Purchased Professional and Technical Services				\$61,207.12
400 <u>Purchased Property Services</u>				
440 Rentals				3,743.88
Total Purchased Property Services				\$3,743.88
500 <u>Other Purchased Services</u>				
530 Communications				9,541.92
580 Travel				2,313.87
Total Other Purchased Services				\$11,855.79
600 <u>Supplies</u>				
610 General Supplies				5,928.23
650 Supplies & Fees – Technology Related				5,099.50
Total Supplies				\$11,027.73
800 <u>Other Objects</u>				
810 Dues and Fees				9,905.37
Total Other Objects				\$9,905.37
Total 2511 Supervision of Fiscal Services - Head of Component				\$1,019,246.67

General Fund (10)

2513 Receiving and Disbursing Funds Services

Elementary

Secondary

Federal

Total

100 Personnel Services – Salaries

100 Personnel Services – Salaries

1,875.33

Total Personnel Services – Salaries

\$1,875.33

200 Personnel Services – Employee Benefits

210 Group Insurance – Contracted Provider

21.40

220 Social Security Contributions

139.62

230 PSERS Retirement Contributions

573.47

Total Personnel Services – Employee Benefits

\$734.49

600 Supplies

610 General Supplies

878.72

Total Supplies

\$878.72

Total 2513 Receiving and Disbursing Funds Services

\$3,488.54

General Fund (10)

2514 Payroll Services

Elementary

Secondary

Federal

Total

100 Personnel Services – Salaries

100 Personnel Services – Salaries

68,227.58

Total Personnel Services – Salaries

\$68,227.58

200 Personnel Services – Employee Benefits

210 Group Insurance – Contracted Provider

10,480.03

220 Social Security Contributions

5,079.43

230 PSERS Retirement Contributions

23,838.77

270 Group Insurance – Self-Insurance

13,749.68

291 Other Retirement Plans

684.96

Total Personnel Services – Employee Benefits

\$53,832.87

800 Other Objects

810 Dues and Fees

116.38

Total Other Objects

\$116.38

Total 2514 Payroll Services

\$122,176.83

General Fund (10)

2600 Operation and Maintenance of Plant Services

<u>Elementary</u>	<u>Secondary</u>	<u>Federal</u>	<u>Total</u>
-------------------	------------------	----------------	--------------

100 Personnel Services – Salaries

100 Personnel Services – Salaries				2,492,373.37
-----------------------------------	--	--	--	--------------

Total Personnel Services – Salaries				\$2,492,373.37
--	--	--	--	-----------------------

200 Personnel Services – Employee Benefits

210 Group Insurance – Contracted Provider				340,328.12
220 Social Security Contributions				184,399.60
230 PSERS Retirement Contributions				865,506.83
270 Group Insurance – Self-Insurance				332,878.33
291 Other Retirement Plans				16,594.08
292 Health Savings Accounts				4,521.66

Total Personnel Services – Employee Benefits				\$1,744,228.62
---	--	--	--	-----------------------

300 Purchased Professional and Technical Services

330 Other Professional Services			5,223.45	48,297.29
350 Security / Safety Services			96.00	103,184.85

Total Purchased Professional and Technical Services			\$5,319.45	\$151,482.14
--	--	--	-------------------	---------------------

400 Purchased Property Services

410 Cleaning Services				64,097.00
420 Utility Services				154,192.19
430 Repairs and Maintenance Services			5,610.00	262,645.27
440 Rentals				21,717.54
460 Extermination Services				9,764.14
490 Other Purchased Property Services				20,213.59

Total Purchased Property Services			\$5,610.00	\$532,629.73
--	--	--	-------------------	---------------------

500 Other Purchased Services

529 Other Insurance				235,443.72
530 Communications				100,002.97
580 Travel				1,564.48

Total Other Purchased Services				\$337,011.17
---------------------------------------	--	--	--	---------------------

600 Supplies

610 General Supplies	199,955.25	188,155.04	75,434.76	463,545.05
620 Energy				598,615.30
650 Supplies & Fees – Technology Related				14,086.41

Total Supplies	\$199,955.25	\$188,155.04	\$75,434.76	\$1,076,246.76
-----------------------	---------------------	---------------------	--------------------	-----------------------

700 Property

752 Capital Equipment – Original and Additional			23,001.50	23,001.50
762 Capitalized Equipment - Replacement				53,724.00

Total Property			\$23,001.50	\$76,725.50
-----------------------	--	--	--------------------	--------------------

800 Other Objects

810 Dues and Fees				4,151.01
-------------------	--	--	--	----------

Total Other Objects				\$4,151.01
----------------------------	--	--	--	-------------------

Total 2600 Operation and Maintenance of Plant Services	\$199,955.25	\$188,155.04	\$109,365.71	\$6,414,848.30
---	---------------------	---------------------	---------------------	-----------------------

General Fund (10)

	<u>Elementary</u>	<u>Secondary</u>	<u>Federal</u>	<u>Total</u>
2620 Operation of Buildings Services				
100 Personnel Services – Salaries				
100 Personnel Services – Salaries				2,479,795.42
Total Personnel Services – Salaries				\$2,479,795.42
200 Personnel Services – Employee Benefits				
210 Group Insurance – Contracted Provider				340,213.36
220 Social Security Contributions				183,493.04
230 PSERS Retirement Contributions				861,137.29
270 Group Insurance – Self-Insurance				329,427.61
291 Other Retirement Plans				15,968.80
292 Health Savings Accounts				4,521.66
Total Personnel Services – Employee Benefits				\$1,734,761.76
300 Purchased Professional and Technical Services				
330 Other Professional Services			5,223.45	48,297.29
Total Purchased Professional and Technical Services			\$5,223.45	\$48,297.29
400 Purchased Property Services				
410 Cleaning Services				46,809.50
420 Utility Services				154,192.19
430 Repairs and Maintenance Services			5,610.00	217,488.34
440 Rentals				20,143.74
460 Extermination Services				9,764.14
490 Other Purchased Property Services				20,138.59
Total Purchased Property Services			\$5,610.00	\$468,536.50
500 Other Purchased Services				
529 Other Insurance				235,443.72
530 Communications				100,002.97
580 Travel				1,564.48
Total Other Purchased Services				\$337,011.17
600 Supplies				
610 General Supplies	167,695.09	155,870.19	75,434.76	399,000.04
620 Energy				598,615.30
650 Supplies & Fees – Technology Related				9,353.90
Total Supplies	\$167,695.09	\$155,870.19	\$75,434.76	\$1,006,969.24
700 Property				
752 Capital Equipment – Original and Additional			23,001.50	23,001.50
Total Property			\$23,001.50	\$23,001.50
800 Other Objects				
810 Dues and Fees				4,100.00
Total Other Objects				\$4,100.00
Total 2620 Operation of Buildings Services	\$167,695.09	\$155,870.19	\$109,269.71	\$6,102,472.88

General Fund (10)

	<u>Elementary</u>	<u>Secondary</u>	<u>Federal</u>	<u>Total</u>
2630 Care and Upkeep of Grounds Services				
400 <u>Purchased Property Services</u>				
410 Cleaning Services				17,200.00
430 Repairs and Maintenance Services				29,973.74
490 Other Purchased Property Services				75.00
Total Purchased Property Services				\$47,248.74
600 <u>Supplies</u>				
610 General Supplies	23,771.07	23,771.06		47,542.13
Total Supplies	\$23,771.07	\$23,771.06		\$47,542.13
800 <u>Other Objects</u>				
810 Dues and Fees				45.00
Total Other Objects				\$45.00
Total 2630 Care and Upkeep of Grounds Services	\$23,771.07	\$23,771.06		\$94,835.87

General Fund (10)

2640 Care and Upkeep of Equipment Services

Elementary

Secondary

Federal

Total

400 Purchased Property Services

430 Repairs and Maintenance Services

2,922.20

Total Purchased Property Services

\$2,922.20

Total 2640 Care and Upkeep of Equipment Services

\$2,922.20

General Fund (10)

	<u>Elementary</u>	<u>Secondary</u>	<u>Federal</u>	<u>Total</u>
2650 Vehicle Operation and Maintenance Services (Other Than Student Transportation Vehicles)				
400 <u>Purchased Property Services</u>				
410 Cleaning Services				87.50
430 Repairs and Maintenance Services				233.14
440 Rentals				1,573.80
Total Purchased Property Services				\$1,894.44
600 <u>Supplies</u>				
610 General Supplies	8,304.13	8,304.12		16,608.25
650 Supplies & Fees – Technology Related				800.00
Total Supplies	\$8,304.13	\$8,304.12		\$17,408.25
700 <u>Property</u>				
762 Capitalized Equipment - Replacement				53,724.00
Total Property				\$53,724.00
800 <u>Other Objects</u>				
810 Dues and Fees				6.01
Total Other Objects				\$6.01
Total 2650 Vehicle Operation and Maintenance Services (Other Than Student Transportation Vehicles)	\$8,304.13	\$8,304.12		\$73,032.70

General Fund (10)

	<u>Elementary</u>	<u>Secondary</u>	<u>Federal</u>	<u>Total</u>
2660 Safety and Security Services				
100 Personnel Services – Salaries				
100 Personnel Services – Salaries				12,577.95
Total Personnel Services – Salaries				\$12,577.95
200 Personnel Services – Employee Benefits				
210 Group Insurance – Contracted Provider				114.76
220 Social Security Contributions				906.56
230 PSERS Retirement Contributions				4,369.54
270 Group Insurance – Self-Insurance				3,450.72
291 Other Retirement Plans				625.28
Total Personnel Services – Employee Benefits				\$9,466.86
300 Purchased Professional and Technical Services				
350 Security / Safety Services			96.00	103,184.85
Total Purchased Professional and Technical Services			\$96.00	\$103,184.85
400 Purchased Property Services				
430 Repairs and Maintenance Services				12,027.85
Total Purchased Property Services				\$12,027.85
600 Supplies				
610 General Supplies	184.96	209.67		394.63
650 Supplies & Fees – Technology Related				3,932.51
Total Supplies	\$184.96	\$209.67		\$4,327.14
Total 2660 Safety and Security Services	\$184.96	\$209.67	\$96.00	\$141,584.65

General Fund (10)

	<u>Elementary</u>	<u>Secondary</u>	<u>Federal</u>	<u>Total</u>
2700 Student Transportation Services				
100 Personnel Services – Salaries				
100 Personnel Services – Salaries				143,002.30
Total Personnel Services – Salaries				\$143,002.30
200 Personnel Services – Employee Benefits				
210 Group Insurance – Contracted Provider				9,389.31
220 Social Security Contributions				10,372.46
230 PSERS Retirement Contributions				48,567.46
270 Group Insurance – Self-Insurance				12,077.52
292 Health Savings Accounts				1,000.00
Total Personnel Services – Employee Benefits				\$81,406.75
300 Purchased Professional and Technical Services				
350 Security / Safety Services				90,677.40
Total Purchased Professional and Technical Services				\$90,677.40
500 Other Purchased Services				
513 Contracted Carriers			42,435.36	4,109,823.32
516 Student Transportation Services From the IU				10,311.20
Total Other Purchased Services			\$42,435.36	\$4,120,134.52
600 Supplies				
610 General Supplies				2,465.66
630 Food				60.00
650 Supplies & Fees – Technology Related				26,725.00
Total Supplies				\$29,250.66
800 Other Objects				
810 Dues and Fees				10.00
Total Other Objects				\$10.00
Total 2700 Student Transportation Services			\$42,435.36	\$4,464,481.63

General Fund (10)

	<u>Elementary</u>	<u>Secondary</u>	<u>Federal</u>	<u>Total</u>
2710 Supervision of Student Transportation Services				
100 Personnel Services – Salaries				
100 Personnel Services – Salaries				143,002.30
Total Personnel Services – Salaries				\$143,002.30
200 Personnel Services – Employee Benefits				
210 Group Insurance – Contracted Provider				9,389.31
220 Social Security Contributions				10,372.46
230 PSERS Retirement Contributions				48,567.46
270 Group Insurance – Self-Insurance				12,077.52
292 Health Savings Accounts				1,000.00
Total Personnel Services – Employee Benefits				\$81,406.75
300 Purchased Professional and Technical Services				
350 Security / Safety Services				90,677.40
Total Purchased Professional and Technical Services				\$90,677.40
500 Other Purchased Services				
513 Contracted Carriers			42,435.36	2,564,072.30
516 Student Transportation Services From the IU				10,311.20
Total Other Purchased Services			\$42,435.36	\$2,574,383.50
600 Supplies				
610 General Supplies				2,465.66
630 Food				60.00
650 Supplies & Fees – Technology Related				26,725.00
Total Supplies				\$29,250.66
800 Other Objects				
810 Dues and Fees				10.00
Total Other Objects				\$10.00
Total 2710 Supervision of Student Transportation Services			\$42,435.36	\$2,918,730.61

General Fund (10)

2711 Supervision of Student Transportation Services – Head of Component

	<u>Elementary</u>	<u>Secondary</u>	<u>Federal</u>	<u>Total</u>
100 Personnel Services – Salaries				
100 Personnel Services – Salaries				143,002.30
Total Personnel Services – Salaries				\$143,002.30
200 Personnel Services – Employee Benefits				
210 Group Insurance – Contracted Provider				9,389.31
220 Social Security Contributions				10,372.46
230 PSERS Retirement Contributions				48,567.46
270 Group Insurance – Self-Insurance				12,077.52
292 Health Savings Accounts				1,000.00
Total Personnel Services – Employee Benefits				\$81,406.75
300 Purchased Professional and Technical Services				
350 Security / Safety Services				90,677.40
Total Purchased Professional and Technical Services				\$90,677.40
500 Other Purchased Services				
513 Contracted Carriers			42,435.36	2,564,072.30
516 Student Transportation Services From the IU				10,311.20
Total Other Purchased Services			\$42,435.36	\$2,574,383.50
600 Supplies				
610 General Supplies				2,465.66
630 Food				60.00
650 Supplies & Fees – Technology Related				26,725.00
Total Supplies				\$29,250.66
800 Other Objects				
810 Dues and Fees				10.00
Total Other Objects				\$10.00
Total 2711 Supervision of Student Transportation Services – Head of Component			\$42,435.36	\$2,918,730.61

General Fund (10)

2750 Nonpublic Transportation

Elementary

Secondary

Federal

Total

500 Other Purchased Services

513 Contracted Carriers

1,545,751.02

Total Other Purchased Services

\$1,545,751.02

Total 2750 Nonpublic Transportation

\$1,545,751.02

General Fund (10)

2800 Support Services – Central

Elementary Secondary Federal Total

100	<u>Personnel Services – Salaries</u>			
	100 Personnel Services – Salaries			904,676.47
Total Personnel Services – Salaries				\$904,676.47
200	<u>Personnel Services – Employee Benefits</u>			
	210 Group Insurance – Contracted Provider			86,816.02
	220 Social Security Contributions			69,187.24
	230 PSERS Retirement Contributions			317,213.19
	240 Tuition Reimbursement			42,563.85
	250 Unemployment Compensation			2,163.38
	260 Workers' Compensation			69,260.59
	270 Group Insurance – Self-Insurance			142,044.22
	291 Other Retirement Plans			15,186.45
	292 Health Savings Accounts			9,498.00
	299 All Other Employee Benefits			4,150.00
Total Personnel Services – Employee Benefits				\$758,082.94
300	<u>Purchased Professional and Technical Services</u>			
	330 Other Professional Services			161,976.50
	340 Technical Services			15,995.02
	360 Employee Training and Development Services		106,595.10	135,677.65
Total Purchased Professional and Technical Services			\$106,595.10	\$313,649.17
400	<u>Purchased Property Services</u>			
	430 Repairs and Maintenance Services			134,793.62
	440 Rentals			7,000.00
Total Purchased Property Services				\$141,793.62
500	<u>Other Purchased Services</u>			
	530 Communications			118.53
	549 Other Advertising/Public Relations			324.00
	580 Travel			1,690.39
Total Other Purchased Services				\$2,132.92
600	<u>Supplies</u>			
	610 General Supplies			3,850.62
	630 Food			1,462.00
	640 Books and Periodicals			91.41
	650 Supplies & Fees – Technology Related			412,092.02
Total Supplies				\$417,496.05
700	<u>Property</u>			
	756 Capitalized Technology Equipment – Original		145,600.61	252,106.31
	766 Capitalized Technology Equipment – Replacement			36,471.54
Total Property			\$145,600.61	\$288,577.85
800	<u>Other Objects</u>			
	810 Dues and Fees			2,083.96

General Fund (10)

2800 Support Services – Central

Elementary

Secondary

Federal

Total

Total Other Objects

\$2,083.96

Total 2800 Support Services – Central

\$252,195.71

\$2,828,492.98

General Fund (10)

2810 Planning, Research, Development and Evaluation Services

Elementary

Secondary

Federal

Total

400 Purchased Property Services

430 Repairs and Maintenance Services

20,915.32

Total Purchased Property Services

\$20,915.32

Total 2810 Planning, Research, Development and Evaluation Services

\$20,915.32

General Fund (10)

2820 Information Services

Elementary

Secondary

Federal

Total

100 Personnel Services – Salaries

100 Personnel Services – Salaries

426,753.47

Total Personnel Services – Salaries

\$426,753.47

200 Personnel Services – Employee Benefits

210 Group Insurance – Contracted Provider

57,876.00

220 Social Security Contributions

31,742.97

230 PSERS Retirement Contributions

150,368.80

270 Group Insurance – Self-Insurance

41,296.86

291 Other Retirement Plans

767.28

Total Personnel Services – Employee Benefits

\$282,051.91

Total 2820 Information Services

\$708,805.38

General Fund (10)

2821 Supervision of Information Services

Elementary

Secondary

Federal

Total

100 Personnel Services – Salaries

100 Personnel Services – Salaries

426,753.47

Total Personnel Services – Salaries

\$426,753.47

200 Personnel Services – Employee Benefits

210 Group Insurance – Contracted Provider

57,876.00

220 Social Security Contributions

31,742.97

230 PSERS Retirement Contributions

150,368.80

270 Group Insurance – Self-Insurance

41,296.86

291 Other Retirement Plans

767.28

Total Personnel Services – Employee Benefits

\$282,051.91

Total 2821 Supervision of Information Services

\$708,805.38

General Fund (10)

2830 Staff Services

	<u>Elementary</u>	<u>Secondary</u>	<u>Federal</u>	<u>Total</u>
100 Personnel Services – Salaries				
100 Personnel Services – Salaries				317,554.00
Total Personnel Services – Salaries				\$317,554.00
200 Personnel Services – Employee Benefits				
210 Group Insurance – Contracted Provider				21,761.79
220 Social Security Contributions				25,399.12
230 PSERS Retirement Contributions				111,510.24
240 Tuition Reimbursement				42,563.85
250 Unemployment Compensation				2,163.38
260 Workers' Compensation				69,260.59
270 Group Insurance – Self-Insurance				79,683.14
291 Other Retirement Plans				9,735.60
292 Health Savings Accounts				8,498.00
299 All Other Employee Benefits				4,150.00
Total Personnel Services – Employee Benefits				\$374,725.71
300 Purchased Professional and Technical Services				
330 Other Professional Services				4,761.50
360 Employee Training and Development Services			106,595.10	135,677.65
Total Purchased Professional and Technical Services			\$106,595.10	\$140,439.15
400 Purchased Property Services				
440 Rentals				7,000.00
Total Purchased Property Services				\$7,000.00
500 Other Purchased Services				
530 Communications				106.60
549 Other Advertising/Public Relations				324.00
580 Travel				1,690.39
Total Other Purchased Services				\$2,120.99
600 Supplies				
610 General Supplies				3,637.20
630 Food				1,462.00
640 Books and Periodicals				91.41
650 Supplies & Fees – Technology Related				16,705.68
Total Supplies				\$21,896.29
800 Other Objects				
810 Dues and Fees				2,083.96
Total Other Objects				\$2,083.96
Total 2830 Staff Services			\$106,595.10	\$865,820.10

General Fund (10)

2831 Supervision of Staff Services

Elementary Secondary Federal Total

100	<u>Personnel Services – Salaries</u>			
	100 Personnel Services – Salaries			317,554.00
Total Personnel Services – Salaries				\$317,554.00
200	<u>Personnel Services – Employee Benefits</u>			
	210 Group Insurance – Contracted Provider			21,761.79
	220 Social Security Contributions			25,399.12
	230 PSERS Retirement Contributions			111,510.24
	250 Unemployment Compensation			2,163.38
	260 Workers' Compensation			69,260.59
	270 Group Insurance – Self-Insurance			79,683.14
	291 Other Retirement Plans			9,735.60
	292 Health Savings Accounts			8,498.00
	299 All Other Employee Benefits			4,150.00
Total Personnel Services – Employee Benefits				\$332,161.86
300	<u>Purchased Professional and Technical Services</u>			
	330 Other Professional Services			4,761.50
Total Purchased Professional and Technical Services				\$4,761.50
500	<u>Other Purchased Services</u>			
	530 Communications			106.60
	549 Other Advertising/Public Relations			324.00
Total Other Purchased Services				\$430.60
600	<u>Supplies</u>			
	610 General Supplies			3,317.20
	630 Food			96.15
	650 Supplies & Fees – Technology Related			16,705.68
Total Supplies				\$20,119.03
800	<u>Other Objects</u>			
	810 Dues and Fees			2,083.96
Total Other Objects				\$2,083.96
Total 2831 Supervision of Staff Services				\$677,110.95

General Fund (10)

	<u>Elementary</u>	<u>Secondary</u>	<u>Federal</u>	<u>Total</u>
2834 Staff Development Services – Non-Instructional, Certified Staff Only				
200 Personnel Services – Employee Benefits				
240 Tuition Reimbursement				42,563.85
Total Personnel Services – Employee Benefits				\$42,563.85
300 Purchased Professional and Technical Services				
360 Employee Training and Development Services			42,595.10	46,097.10
Total Purchased Professional and Technical Services			\$42,595.10	\$46,097.10
400 Purchased Property Services				
440 Rentals				3,500.00
Total Purchased Property Services				\$3,500.00
500 Other Purchased Services				
580 Travel				324.12
Total Other Purchased Services				\$324.12
600 Supplies				
630 Food				507.25
640 Books and Periodicals				43.12
Total Supplies				\$550.37
Total 2834 Staff Development Services – Non-Instructional, Certified Staff Only			\$42,595.10	\$93,035.44

General Fund (10)

	<u>Elementary</u>	<u>Secondary</u>	<u>Federal</u>	<u>Total</u>
2836 Staff Development Services – Non-Instructional, Non-Certified Staff Only				
300 <u>Purchased Professional and Technical Services</u>				
360 Employee Training and Development Services			64,000.00	89,580.55
Total Purchased Professional and Technical Services			\$64,000.00	\$89,580.55
400 <u>Purchased Property Services</u>				
440 Rentals				3,500.00
Total Purchased Property Services				\$3,500.00
500 <u>Other Purchased Services</u>				
580 Travel				1,366.27
Total Other Purchased Services				\$1,366.27
600 <u>Supplies</u>				
640 Books and Periodicals				48.29
Total Supplies				\$48.29
Total 2836 Staff Development Services – Non-Instructional, Non-Certified Staff Only			\$64,000.00	\$94,495.11

General Fund (10)

2839 Other Staff Services

Elementary

Secondary

Federal

Total

600 Supplies

610 General Supplies

320.00

630 Food

858.60

Total Supplies

\$1,178.60

Total 2839 Other Staff Services

\$1,178.60

General Fund (10)

	<u>Elementary</u>	<u>Secondary</u>	<u>Federal</u>	<u>Total</u>
2840 Data Processing Services				
100 Personnel Services – Salaries				
100 Personnel Services – Salaries				160,369.00
Total Personnel Services – Salaries				\$160,369.00
200 Personnel Services – Employee Benefits				
210 Group Insurance – Contracted Provider				7,178.23
220 Social Security Contributions				12,045.15
230 PSERS Retirement Contributions				55,334.15
270 Group Insurance – Self-Insurance				21,064.22
291 Other Retirement Plans				4,683.57
292 Health Savings Accounts				1,000.00
Total Personnel Services – Employee Benefits				\$101,305.32
300 Purchased Professional and Technical Services				
330 Other Professional Services				21,240.00
340 Technical Services				15,995.02
Total Purchased Professional and Technical Services				\$37,235.02
400 Purchased Property Services				
430 Repairs and Maintenance Services				113,878.30
Total Purchased Property Services				\$113,878.30
500 Other Purchased Services				
530 Communications				11.93
Total Other Purchased Services				\$11.93
600 Supplies				
610 General Supplies				213.42
650 Supplies & Fees – Technology Related				395,386.34
Total Supplies				\$395,599.76
700 Property				
756 Capitalized Technology Equipment – Original			145,600.61	252,106.31
766 Capitalized Technology Equipment – Replacement				36,471.54
Total Property			\$145,600.61	\$288,577.85
Total 2840 Data Processing Services			\$145,600.61	\$1,096,977.18

General Fund (10)

	<u>Elementary</u>	<u>Secondary</u>	<u>Federal</u>	<u>Total</u>
2850 State and Federal Agency Liaison Services				
300 <u>Purchased Professional and Technical Services</u>				
330 Other Professional Services				135,975.00
Total Purchased Professional and Technical Services				\$135,975.00
Total 2850 State and Federal Agency Liaison Services				\$135,975.00

General Fund (10)

2900 Other Support Services

Elementary

Secondary

Federal

Total

500 Other Purchased Services

595 IU Payments By Withholding

36,466.25

Total Other Purchased Services

\$36,466.25

800 Other Objects

899 Pass-Through Funds

414,010.16

Total Other Objects

\$414,010.16

Total 2900 Other Support Services

\$450,476.41

General Fund (10)

2910 Support Services Not Listed Elsewhere In the 2000 Series

Elementary

Secondary

Federal

Total

500 Other Purchased Services

595 IU Payments By Withholding

36,466.25

Total Other Purchased Services

\$36,466.25

Total 2910 Support Services Not Listed Elsewhere In the 2000 Series

\$36,466.25

General Fund (10)

2990 Pass-Through Funds

Elementary

Secondary

Federal

Total

800 Other Objects

899 Pass-Through Funds

414,010.16

Total Other Objects

\$414,010.16

Total 2990 Pass-Through Funds

\$414,010.16

General Fund (10)

3000 Operation of Non-Instructional Services

Total

100 Personnel Services – Salaries

100 Personnel Services – Salaries 1,072,186.03

Total Personnel Services – Salaries \$1,072,186.03

200 Personnel Services – Employee Benefits

210 Group Insurance – Contracted Provider 18,307.28

220 Social Security Contributions 81,263.08

230 PSERS Retirement Contributions 464,237.80

270 Group Insurance – Self-Insurance 45,242.08

292 Health Savings Accounts 7,000.00

Total Personnel Services – Employee Benefits \$616,050.24

300 Purchased Professional and Technical Services

330 Other Professional Services 120,131.65

350 Security / Safety Services 9,542.00

Total Purchased Professional and Technical Services \$129,673.65

400 Purchased Property Services

430 Repairs and Maintenance Services 384.00

440 Rentals 11,062.50

Total Purchased Property Services \$11,446.50

500 Other Purchased Services

510 Student Transportation Services 88,942.50

580 Travel 6,629.36

Total Other Purchased Services \$95,571.86

600 Supplies

610 General Supplies 69,095.78

650 Supplies & Fees – Technology Related 257.66

Total Supplies \$69,353.44

700 Property

752 Capital Equipment – Original and Additional 11,025.00

Total Property \$11,025.00

800 Other Objects

810 Dues and Fees 3,534.40

860 Grants To Municipal and Community Service Organizations 578,340.00

890 Miscellaneous Expenditures 9,424.24

Total Other Objects \$591,298.64

Total 3000 Operation of Non-Instructional Services \$2,596,605.36

General Fund (10)

3200 Student Activities

Elementary Secondary Federal Total

100	<u>Personnel Services – Salaries</u>			
	100 Personnel Services – Salaries			1,066,081.61
Total Personnel Services – Salaries				\$1,066,081.61
200	<u>Personnel Services – Employee Benefits</u>			
	210 Group Insurance – Contracted Provider			18,307.28
	220 Social Security Contributions			79,915.43
	230 PSERS Retirement Contributions			365,318.87
	270 Group Insurance – Self-Insurance			26,233.00
	292 Health Savings Accounts			1,000.00
Total Personnel Services – Employee Benefits				\$490,774.58
300	<u>Purchased Professional and Technical Services</u>			
	330 Other Professional Services			120,131.65
	350 Security / Safety Services			9,542.00
Total Purchased Professional and Technical Services				\$129,673.65
400	<u>Purchased Property Services</u>			
	430 Repairs and Maintenance Services			384.00
	440 Rentals			11,062.50
Total Purchased Property Services				\$11,446.50
500	<u>Other Purchased Services</u>			
	510 Student Transportation Services			88,942.50
	580 Travel			6,629.36
Total Other Purchased Services				\$95,571.86
600	<u>Supplies</u>			
	610 General Supplies			69,095.78
	650 Supplies & Fees – Technology Related			257.66
Total Supplies				\$69,353.44
700	<u>Property</u>			
	752 Capital Equipment – Original and Additional			11,025.00
Total Property				\$11,025.00
800	<u>Other Objects</u>			
	810 Dues and Fees			3,534.40
	890 Miscellaneous Expenditures		558.00	9,424.24
Total Other Objects			\$558.00	\$12,958.64
Total 3200 Student Activities			\$558.00	\$1,886,885.28

General Fund (10)

3300 Community Services

Elementary

Secondary

Federal

Total

100 Personnel Services – Salaries

100 Personnel Services – Salaries

6,104.42

Total Personnel Services – Salaries

\$6,104.42

200 Personnel Services – Employee Benefits

220 Social Security Contributions

1,347.65

230 PSERS Retirement Contributions

98,918.93

270 Group Insurance – Self-Insurance

19,009.08

292 Health Savings Accounts

6,000.00

Total Personnel Services – Employee Benefits

\$125,275.66

800 Other Objects

860 Grants To Municipal and Community Service Organizations

578,340.00

Total Other Objects

\$578,340.00

Total 3300 Community Services

\$709,720.08

General Fund (10)

4000 Facilities Acquisition, Construction and Improvement Services

Total

600 Supplies

610 General Supplies

5,004.50

Total Supplies

\$5,004.50

Total 4000 Facilities Acquisition, Construction and Improvement Services

\$5,004.50

General Fund (10)

4200 Existing Site Improvement Services

Elementary

Secondary

Federal

Total

600 Supplies

610 General Supplies

5,004.50

Total Supplies

\$5,004.50

Total 4200 Existing Site Improvement Services

\$5,004.50

General Fund (10)

5000 Other Expenditures and Financing Uses

Total

800 Other Objects

830 Interest 3,321,397.86

Total Other Objects \$3,321,397.86

900 Other Uses of Funds

910 Redemption of Principal 7,150,000.02

Total Other Uses of Funds \$7,150,000.02

Total 5000 Other Expenditures and Financing Uses \$10,471,397.88

General Fund (10)

	<u>Elementary</u>	<u>Secondary</u>	<u>Federal</u>	<u>Total</u>
5100 Debt Service / Other Expenditures and Financing Uses				
800 Other Objects				
830 Interest				3,321,397.86
Total Other Objects				\$3,321,397.86
900 Other Uses of Funds				
910 Redemption of Principal				7,150,000.02
Total Other Uses of Funds				\$7,150,000.02
Total 5100 Debt Service / Other Expenditures and Financing Uses				\$10,471,397.88

General Fund (10)

	<u>Elementary</u>	<u>Secondary</u>	<u>Federal</u>	<u>Total</u>
5110 Debt Service				
800 Other Objects				
830 Interest				3,321,397.86
Total Other Objects				\$3,321,397.86
900 Other Uses of Funds				
910 Redemption of Principal				7,150,000.02
Total Other Uses of Funds				\$7,150,000.02
Total 5110 Debt Service				\$10,471,397.88

Capital Reserve Fund - § 1431 (32)

2000 Support Services

400 Purchased Property Services

430 Repairs and Maintenance Services

186,068.12

Total Purchased Property Services

\$186,068.12

700 Property

762 Capitalized Equipment - Replacement

61,460.00

Total Property

\$61,460.00

Total 2000 Support Services

\$247,528.12

Capital Reserve Fund - § 1431 (32)

2600 Operation and Maintenance of Plant Services

Elementary

Secondary

Federal

Total

400 Purchased Property Services

430 Repairs and Maintenance Services

186,068.12

Total Purchased Property Services

\$186,068.12

700 Property

762 Capitalized Equipment - Replacement

61,460.00

Total Property

\$61,460.00

Total 2600 Operation and Maintenance of Plant Services

\$247,528.12

Capital Reserve Fund - § 1431 (32)

2620 Operation of Buildings Services

Elementary

Secondary

Federal

Total

400 Purchased Property Services

430 Repairs and Maintenance Services

186,068.12

Total Purchased Property Services

\$186,068.12

700 Property

762 Capitalized Equipment - Replacement

61,460.00

Total Property

\$61,460.00

Total 2620 Operation of Buildings Services

\$247,528.12

Capital Reserve Fund - § 1431 (32)

4000 Facilities Acquisition, Construction and Improvement Services

Total

400 Purchased Property Services

430 Repairs and Maintenance Services

732,780.61

Total Purchased Property Services

\$732,780.61

Total 4000 Facilities Acquisition, Construction and Improvement Services

\$732,780.61

LEA : 124157203 Phoenixville Area SD

Printed 12/19/2022 9:30:34 AM

Capital Reserve Fund - § 1431 (32)

4200 Existing Site Improvement Services

Elementary

Secondary

Federal

Total

400 Purchased Property Services

430 Repairs and Maintenance Services

732,780.61

Total Purchased Property Services

\$732,780.61

Total 4200 Existing Site Improvement Services

\$732,780.61

Other Capital Projects Fund (39)

4000 Facilities Acquisition, Construction and Improvement Services

Total

300 Purchased Professional and Technical Services

330 Other Professional Services

11,829.25

Total Purchased Professional and Technical Services

\$11,829.25

Total 4000 Facilities Acquisition, Construction and Improvement Services

\$11,829.25

Other Capital Projects Fund (39)

4100 Site Acquisition Services – Original and Additional

Elementary

Secondary

Federal

Total

300 Purchased Professional and Technical Services

330 Other Professional Services

11,829.25

Total Purchased Professional and Technical Services

\$11,829.25

Total 4100 Site Acquisition Services – Original and Additional

\$11,829.25

	<u>General Fund(10)</u>	<u>Student Sponsored Activity Fund(21)</u>	<u>Public Purpose Trust(27)</u>	<u>Other Compt Approved (28)</u>	<u>Athletic / Activity(29)</u>
1000 Instruction					
1100 Regular Programs - Elementary / Secondary	38,662,406.25				
1200 Special Programs - Elementary / Secondary	13,950,954.82				
1300 Vocational Education	728,388.00				
1400 Other Instructional Programs - Elementary / Secondary	1,871,128.30				
1600 Adult Education Programs	4,894.24				
Total Instruction	\$55,217,771.61				
2000 Support Services					
2100 Support Services - Students	5,039,399.96				
2200 Support Services - Instructional Staff	2,772,638.93				
2300 Support Services - Administration	5,603,150.18				
2400 Support Services - Pupil Health	1,388,209.85				
2500 Support Services - Business	1,144,912.04				
2600 Operation and Maintenance of Plant Services	6,414,848.30				
2700 Student Transportation Services	4,464,481.63				
2800 Support Services - Central	2,828,492.98				
2900 Other Support Services	450,476.41				
Total Support Services	\$30,106,610.28				
3000 Operation of Non-Instructional Services					
3200 Student Activities	1,886,885.28				
3300 Community Services	709,720.08				
Total Operation of Non-Instructional Services	\$2,596,605.36				
4000 Facilities Acquisition, Construction and Improvement Services					
4100 Site Acquisition Services - Original and Additional					
4200 Existing Site Improvement Services	5,004.50				
Total Facilities Acquisition, Construction and Improvement Services	\$5,004.50				
5000 Other Expenditures and Financing Uses					
5100 Debt Service / Other Expenditures and Financing Uses	10,471,397.88				
Total Other Expenditures and Financing Uses	\$10,471,397.88				
TOTAL ACTUAL EXPENDITURES & OTHER FINANCING USES	\$98,397,389.63				

	<u>Capital Reserve (690.1850)(31)</u>	<u>Capital Reserve (1431)(32)</u>	<u>Other Capital Projects Fund(39)</u>	<u>Debt Service(40)</u>	<u>Permanent(90)</u>
1000 Instruction					
1100 Regular Programs - Elementary / Secondary					
1200 Special Programs - Elementary / Secondary					
1300 Vocational Education					
1400 Other Instructional Programs - Elementary / Secondary					
1600 Adult Education Programs					
Total Instruction					
2000 Support Services					
2100 Support Services - Students					
2200 Support Services - Instructional Staff					
2300 Support Services - Administration					
2400 Support Services - Pupil Health					
2500 Support Services - Business					
2600 Operation and Maintenance of Plant Services				247,528.12	
2700 Student Transportation Services					
2800 Support Services - Central					
2900 Other Support Services					
Total Support Services				\$247,528.12	
3000 Operation of Non-Instructional Services					
3200 Student Activities					
3300 Community Services					
Total Operation of Non-Instructional Services					
4000 Facilities Acquisition, Construction and Improvement Services					
4100 Site Acquisition Services - Original and Additional				11,829.25	
4200 Existing Site Improvement Services			732,780.61		
Total Facilities Acquisition, Construction and Improvement Services			\$732,780.61	\$11,829.25	
5000 Other Expenditures and Financing Uses					
5100 Debt Service / Other Expenditures and Financing Uses					
Total Other Expenditures and Financing Uses					
TOTAL ACTUAL EXPENDITURES & OTHER FINANCING USES			\$980,308.73	\$11,829.25	

Total

1000 Instruction	
1100 Regular Programs - Elementary / Secondary	38,662,406.25
1200 Special Programs - Elementary / Secondary	13,950,954.82
1300 Vocational Education	728,388.00
1400 Other Instructional Programs - Elementary / Secondary	1,871,128.30
1600 Adult Education Programs	4,894.24
Total Instruction	\$55,217,771.61
2000 Support Services	
2100 Support Services - Students	5,039,399.96
2200 Support Services - Instructional Staff	2,772,638.93
2300 Support Services - Administration	5,603,150.18
2400 Support Services - Pupil Health	1,388,209.85
2500 Support Services - Business	1,144,912.04
2600 Operation and Maintenance of Plant Services	6,662,376.42
2700 Student Transportation Services	4,464,481.63
2800 Support Services - Central	2,828,492.98
2900 Other Support Services	450,476.41
Total Support Services	\$30,354,138.40
3000 Operation of Non-Instructional Services	
3200 Student Activities	1,886,885.28
3300 Community Services	709,720.08
Total Operation of Non-Instructional Services	\$2,596,605.36
4000 Facilities Acquisition, Construction and Improvement Services	
4100 Site Acquisition Services - Original and Additional	11,829.25
4200 Existing Site Improvement Services	737,785.11
Total Facilities Acquisition, Construction and Improvement Services	\$749,614.36
5000 Other Expenditures and Financing Uses	
5100 Debt Service / Other Expenditures and Financing Uses	10,471,397.88
Total Other Expenditures and Financing Uses	\$10,471,397.88
TOTAL ACTUAL EXPENDITURES & OTHER FINANCING USES	\$99,389,527.61

PSERS Salary Data (Salary Data should relate to the General Fund only)

Amount Description	Amount
Total Salary Base for salaries subject to PSERS withholding	39,249,989.78
Total Federally Funded salaries subject to PSERS withholding	1,078,472.44
	<hr/>

Title I Expenditure Data

Amount Description	Amount
Expenditures Funded with Current Title I Funds	519,019.44
Expenditures Funded with Carry over Title I Funds	
Total Title I Expenditure Data	<hr/> \$519,019.44 <hr/>

Title IV Revenue Data

Amount Description	Amount
Revenue from Title IV-A-1: Student Support and Academic Enrichment Grants	33,249.00
Revenue from Title IV-B: 21st Century Community Learning Centers	
	<hr/>

Title V Revenue Data

Amount Description	Amount
Revenue from Title V-B-2: Rural and Low-Income School Programs	
Revenue from Title V-B-1: Small Rural School Achievement (Directly from the Federal Govt)	
	<hr/>

1 . <u>Current Special Education Expenditures within Function 1000.\r\nSee list of exclusions in the note below.</u>	46,738,588.19
2 . <u>Current Special Education Expenditures within Function 2000.\r\nSee list of exclusions in the note below.</u>	28,100,071.65
3 . <u>Current Special Education Expenditures within Sub-Function 2100.\r\nThis data should also be included in line 2 above.\r\nSee list of exclusions in the note below.</u>	5,039,399.96
4 . <u>Current Special Education Expenditures within Sub-Function 2200.\r\nThis data should also be included in line 2 above.\r\nSee list of exclusions in the note below.</u>	2,772,638.93
5 . <u>Current Special Education Expenditures within Sub-Function 2700.\r\nThis data should also be included in line 2 above.\r\nSee list of exclusions in the note below.</u>	2,908,419.41
6 . <u>Current Special Education Expenditures within Sub-Function 3100.\r\nSee list of exclusions in the note below.</u>	
7 . <u>Current Special Education Expenditures within Sub-Function 3200.\r\nSee list of exclusions in the note below.</u>	1,886,885.28

Note: The Current Special Education Expenditure amounts for each line should be calculated as follows:

- * Include the total expenditures for special education costs from all funds for the function/sub-function requested
- * Exclude data from sub-functions: 1243,1450,1500,1600,1807,2280,2450,2750,2990
- * Exclude data from objects: 322,511,512,516,561,562,564,566,592,593,594,595,596,597,700,830,899

Benefits for Staff Relative to Collective Bargaining Agreements

	OBJECT	COVERED	NOT COVERED	TOTAL
10 General Fund	No Self Insurance data to report			
	211 Medical Insurance	2,106,342.00	991,220.00	3,097,562.00
	212 Dental Insurance	86,297.00	40,610.00	126,907.00
	215 Eye Care Insurance	5,786.00	2,723.00	8,509.00
	216 Prescription Insurance			
	271 Self-Insurance Medical Benefits			
	272 Self-Insurance Dental Benefits			
	275 Self-Insurance Eye Care Benefits			
	276 Self-Insurance Prescription Benefits			
	FUND TOTAL	\$2,198,425.00	\$1,034,553.00	\$3,232,978.00
50 Enterprise Fund	No Self Insurance data to report			
	211 Medical Insurance			
	212 Dental Insurance			
	215 Eye Care Insurance			
	216 Prescription Insurance			
	271 Self-Insurance Medical Benefits			
	272 Self-Insurance Dental Benefits			
	275 Self-Insurance Eye Care Benefits			
	276 Self-Insurance Prescription Benefits			
	FUND TOTAL			
60 Internal Service Fund	No Self Insurance data to report			
	211 Medical Insurance			
	212 Dental Insurance			
	215 Eye Care Insurance			
	216 Prescription Insurance			
	271 Self-Insurance Medical Benefits			
	272 Self-Insurance Dental Benefits			
	275 Self-Insurance Eye Care Benefits			
	276 Self-Insurance Prescription Benefits			
	FUND TOTAL			
Total of All Funds		\$2,198,425.00	\$1,034,553.00	\$3,232,978.00

LEA : 124157203 Phoenixville Area SD

Printed 12/19/2022 9:30:52 AM

Function	Special Education (Prior Year)	Nonspecial Education (Prior Year)	Total (Prior Year)	Special Education (Current Year)	Nonspecial Education (Current Year)	Total (Current Year)
2120 Guidance Services	851,610.00	851,610.00	1,703,220.00	886,453.15	886,453.15	1,772,906.30
2140 Psychological Services	405,938.00	405,938.00	811,876.00	480,242.14	480,242.15	960,484.29
2150 Speech Pathology and Audiology Services	472,253.00		472,253.00	555,703.88		555,703.88
2160 Social Work Services	2,625.00		2,625.00	21,345.19		21,345.19
2260 Instruction and Curriculum Development Services	380,801.00	380,800.69	761,601.69	797,520.54	797,520.54	1,595,041.08
2350 Legal and Accounting Services	92,701.00	276,515.00	369,216.00	11,424.81	356,824.37	368,249.18
2420 Medical Services	161,688.00	272,626.00	434,314.00	235,508.51	303,840.14	539,348.65
2440 Nursing Services	219,310.00	681,793.95	901,103.95	213,477.44	635,383.76	848,861.20
2700 Student Transportation Services	854,963.00	3,682,280.01	4,537,243.01	514,876.70	2,403,853.91	2,918,730.61
Total	\$3,441,889.00	\$6,551,563.65	\$9,993,452.65	\$3,716,552.36	\$5,864,118.02	\$9,580,670.38

(PRINCIPAL AMOUNTS ONLY)

GOVERNMENTAL FUNDS/ ACTIVITIES

	Short-Term Borrowing	General Obligation Bonds/Notes	Authority Building Obligations	OLTD, Ext Term Fin, Leases	Other Post-Employment Benefits (OPEB)	Compensated Absences	Net Pension Liability	Total
1. Debt at Beginning of Fiscal Year		128,482,000.00			7,328,737.00	1,797,933.00	121,324,935.00	258,933,605.00
2. Additional Debt Incurred During Year					969,091.00			969,091.00
3. Retirements and Repayments		7,150,000.00			158,620.00	29,388.58	15,809,139.00	23,147,147.58
4. Debt at End of Fiscal Year		121,332,000.00			8,139,208.00	1,768,544.42	105,515,796.00	236,755,548.42
5. Accreted Interest at End Of Fiscal Year								
6. Total Debt and Accreted Interest		121,332,000.00			8,139,208.00	1,768,544.42	105,515,796.00	236,755,548.42
7. Current Portion P&I - Due within 1 year		7,416,000.00						7,416,000.00
8. Interest Paid during current fiscal year		3,323,347.00						3,323,347.00

(PRINCIPAL AMOUNTS ONLY)

PROPRIETARY FUNDS

- 1. Debt at Beginning of Fiscal Year
- 2. Additional Debt Incurred During Year
- 3. Retirements and Repayments
- 4. Debt at End of Fiscal Year
- 5. Accreted Interest at End Of Fiscal Year
- 6. Total Debt and Accreted Interest
- 7. Current Portion P&I - Due within 1 year
- 8. Interest Paid during current fiscal year

Total Principal and Interest Payments Made by Your School - All Funds

Function	Fund		Principal (910)	Principal (920)	Interest (830)	Total (Principal +Interest)	Misc Other Uses (990)
5110	10	General Fund	7,150,000.02		3,321,397.86	10,471,397.88	
5110	20	Special Revenue Funds					
5110	30	Capital Projects Funds					
5110	40	Debt Service Fund					
5110	90	Permanent Fund					
5120	10	General Fund					
5120	20	Special Revenue Funds					
5120	30	Capital Projects Funds					
5120	40	Debt Service Fund					
5140	10	General Fund					
5140	20	Special Revenue Funds					
5140	30	Capital Projects Funds					
5140	40	Debt Service Fund					
5140	90	Permanent Fund					
Total Debt Payments - Governmental Funds			\$7,150,000.02		\$3,321,397.86	\$10,471,397.88	

Function	Fund		Principal (910)	Principal (920)	Interest (830)	Total (Principal +Interest)
5110	50	Enterprise Fund				
5110	60	Internal Service Fund				
5120	50	Enterprise Fund				
5120	60	Internal Service Fund				
5140	50	Enterprise Fund				
5140	60	Internal Service Fund				
Total Debt Payments - Proprietary Funds						

Debt Details
Governmental Funds/ Activities

Debt Category	Debt Issue Date (MM/YYYY)	Principal Amounts Only			Debt at End of Fiscal Year	Current Portion Due Within One Year (Principal and Interest)	Interest Paid During Fiscal Year
		Debt at Beginning of Fiscal Year	Additions	Reductions / Repayments			
General Obligation Bonds/Notes – CIB	03/2021	9,420,000.00		5,000.00	9,415,000.00	10,000.00	194,021.00
General Obligation Bonds/Notes – CIB	06/2021	5,892,000.00		450,000.00	5,442,000.00	576,000.00	52,642.00
General Obligation Bonds/Notes – CIB	06/2020	16,475,000.00		2,515,000.00	13,960,000.00	2,600,000.00	537,325.00
General Obligation Bonds/Notes – CIB	06/2020	49,405,000.00		400,000.00	49,005,000.00	300,000.00	1,025,938.00
General Obligation Bonds/Notes – CIB	02/2019	9,975,000.00		5,000.00	9,970,000.00	5,000.00	348,788.00
General Obligation Bonds/Notes – CIB	02/2018	9,980,000.00		5,000.00	9,975,000.00	5,000.00	306,533.00
General Obligation Bonds/Notes – CIB	02/2017	8,695,000.00		5,000.00	8,690,000.00	5,000.00	294,825.00
General Obligation Bonds/Notes – CIB	02/2017	4,260,000.00		1,030,000.00	3,230,000.00	1,055,000.00	77,650.00
General Obligation Bonds/Notes – CIB	07/2017	2,700,000.00		1,315,000.00	1,385,000.00	1,385,000.00	102,125.00
General Obligation Bonds/Notes – CIB	07/2017	8,860,000.00		740,000.00	8,120,000.00	775,000.00	327,100.00
General Obligation Bonds/Notes – CIB	11/2016	2,820,000.00		680,000.00	2,140,000.00	700,000.00	56,400.00
Compensated Absences		1,797,933.00		29,388.58	1,768,544.42		
Other Post-Employment Benefits (OPEB)		7,328,737.00	969,091.00	158,620.00	8,139,208.00		
Net Pension Liability		121,324,935.00		15,809,139.00	105,515,796.00		
Totals for Debt Entered:		\$258,933,605.00	\$969,091.00	\$23,147,147.58	\$236,755,548.42	\$7,416,000.00	\$3,323,347.00

General Fund (10)

Section 1: Tuition/Purchased Services as Reported within Expenditure Detail

	Amount
Tuition Reported in General Fund Expenditures 1000-560	7,253,177.88
Purchased Services in General Fund Expenditures 1000-594 and 1000-597	

Section 1 Total	\$7,253,177.88
------------------------	-----------------------

Section 2: Tuition Paid to Institution Types During Fiscal Year

	Tuition Paid For Nonspecial Education	Tuition Paid For Special Education	Total
1 1306 Institutions			
2 Institutionalized Children's Programs			
3 Juveniles Incarcerated in Adult Facilities			
4 Residential Treatment Facilities			
5 Other Local Education Agencies	6,874.65	71,872.40	78,747.05
6 Brick and Mortar Charter Schools	3,835,178.43	1,544,263.17	5,379,441.60
7 Cyber Charter Schools			
8 Career and Technology Centers	728,388.00		728,388.00
9 Approved Private Schools	4,801.53	717,206.34	722,007.87
10 PA Chartered Schools for the Deaf and Blind			
11 Private Residential Rehabilitative Institutions		57,951.60	57,951.60
12 Juvenile Detention Centers			
13 Special Program Jointures			
14 Other Tuition Not Included Elsewhere In This Section	74,948.35	211,693.41	286,641.76
Section 2 Total	\$4,650,190.96	\$2,602,986.92	\$7,253,177.88

Food Service / Cafeteria Operations Fund (51)

3000 Operation of Non-Instructional Services

Total

100 Personnel Services – Salaries

100 Personnel Services – Salaries 40,025.41

Total Personnel Services – Salaries \$40,025.41

300 Purchased Professional and Technical Services

330 Other Professional Services 6,776.75

Total Purchased Professional and Technical Services \$6,776.75

500 Other Purchased Services

570 Food Service Management 1,696,495.54

Total Other Purchased Services \$1,696,495.54

600 Supplies

610 General Supplies 5,895.00

630 Food 119,079.84

650 Supplies & Fees – Technology Related 1,120.58

Total Supplies \$126,095.42

700 Property

740 Depreciation 50,982.06

Total Property \$50,982.06

800 Other Objects

810 Dues and Fees 2,871.69

Total Other Objects \$2,871.69

Total 3000 Operation of Non-Instructional Services \$1,923,246.87

Food Service / Cafeteria Operations Fund (51)

	<u>Elementary</u>	<u>Secondary</u>	<u>Federal</u>	<u>Total</u>
3100 Food Services				
100 Personnel Services – Salaries				
100 Personnel Services – Salaries				40,025.41
Total Personnel Services – Salaries				\$40,025.41
300 Purchased Professional and Technical Services				
330 Other Professional Services				6,776.75
Total Purchased Professional and Technical Services				\$6,776.75
500 Other Purchased Services				
570 Food Service Management				1,696,495.54
Total Other Purchased Services				\$1,696,495.54
600 Supplies				
610 General Supplies				5,895.00
630 Food				119,079.84
650 Supplies & Fees – Technology Related				1,120.58
Total Supplies				\$126,095.42
700 Property				
740 Depreciation				50,982.06
Total Property				\$50,982.06
800 Other Objects				
810 Dues and Fees				2,871.69
Total Other Objects				\$2,871.69
Total 3100 Food Services				\$1,923,246.87

	<u>Food Service(51)</u>	<u>Child Care Operations(52)</u>	<u>Other Enterprise(58)</u>	<u>Internal Service(60)</u>	<u>Total</u>
3000 <u>Operation of Non-Instructional Services</u>					
3100 Food Services	1,923,246.87				1,923,246.87
Total Operation of Non-Instructional Services	\$1,923,246.87				\$1,923,246.87
TOTAL ACTUAL EXPENDITURES & OTHER FINANCING USES	\$1,923,246.87				\$1,923,246.87

LEA : 124157203 Phoenixville Area SD

Printed 12/19/2022 9:31:05 AM

Fund	School	School Number	Local Personnel	Local Nonpersonnel	State Personnel	State Nonpersonnel	Federal Personnel	Federal Nonpersonnel	Total	Explanation
10	Barkley El Sch	1430	3,911,562.00	700,351.00	881,979.00	157,915.00	41,463.00	8,857.00	5,702,127.00	
	Manavon El Sch	8395	6,459,473.00	1,156,545.00	1,456,482.00	260,778.00	68,470.00	14,627.00	9,416,375.00	
	Phoenixville Area HS	1426	16,660,783.00	2,983,053.00	3,756,674.00	672,619.00	176,605.00	37,727.00	24,287,461.00	
	Phoenixville Area MS	1425	11,320,487.00	2,026,892.00	2,552,544.00	457,024.00	119,997.00	25,634.00	16,502,578.00	
	Phoenixville Early Learning Ctr	8396	7,484,797.00	1,340,126.00	1,687,672.00	302,172.00	79,339.00	16,949.00	10,911,055.00	
	Schuylkill El Sch	4841	5,433,587.00	972,864.00	1,225,165.00	219,361.00	57,596.00	12,304.00	7,920,877.00	
Total			51,270,689.00	9,179,831.00	11,560,516.00	2,069,869.00	543,470.00	116,098.00	74,740,473.00	